

IMPORTANT NOTICE

The following document is intended for support of Laminators Legacy Installation Systems, which are currently in-process of being phased out. If you are in the design phase of your project, please refer to Laminators NEW and IMPROVED Field-Fabricated Installation Systems (1-Piece, Tight-Fit Molding, Clip & Caulk) with Omega-Lite® ACM and Omega CI® rigid insulation panels.

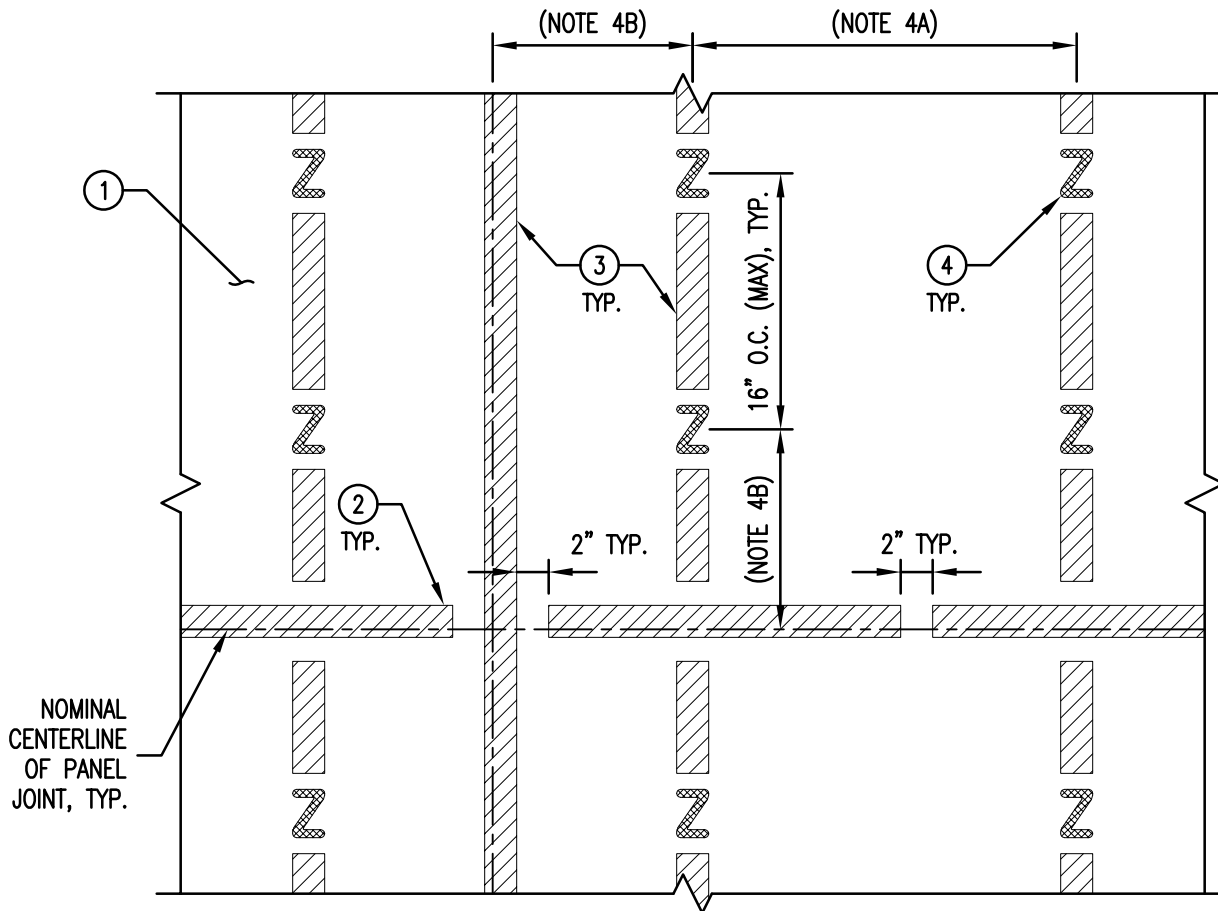
The following document is NOT comprehensive for design, bidding, or installation when used in isolation. Please refer to all related documents in their entirety for complete information regarding this ACM panel system. Such documents include, but may not be limited to, Technical Guides, Architectural Color Chart, Approved Materials List, Systems Guides, Technical Bulletins, Technical Data Sheets, CAD Drawings, Specifications, and Submittals. Visit LaminatorsInc.com for information on the latest documents regarding this panel system.

To consult directly with one of our Professional Engineers regarding our ACM panel systems, contact Laminators Technical Support between the hours of 8:00am – 5:00pm EST:

800.523.2347

LaminatorsInc.com

engineering@laminatorsinc.com



PARTIAL SYSTEM ELEVATION
(PANELS AND MOLDINGS NOT SHOWN)

- ① 5/8" EXTERIOR GRADE, PLYWOOD SHEATHING WITH LAMINATORS APPROVED AIR AND WATER BARRIER
- ② HORIZONTAL FOAM TAPE APPLIED ALONG HORIZONTAL PANEL JOINTS WITH 2" MIN GAPS FOR VENTING AND DRAINAGE AT 24" O.C. AND AT INTERFACES WITH CONTINUOUS VERTICAL FOAM TAPE
- ③ CONTINUOUS VERTICAL FOAM TAPE APPLIED ALONG VERTICAL PANEL JOINTS; DISCONTINUOUS VERTICAL FOAM TAPE APPLIED BETWEEN PANEL ADHESIVE LOCATIONS

- ④ 1/4" (MIN) TO 3/8" (MAX) BEAD OF LAMINATORS APPROVED PANEL ADHESIVE APPLIED IN 2" X 3" Z-FORMATIONS; SPACING OF ADHESIVE LOCATIONS TO BE BASED ON PROJECT SPECIFIC WIND LOADS:

0 TO 40 PSF:

- A. 24" O.C. (MAX) HORIZONTAL SPACING AND 16" O.C. (MAX) VERTICAL SPACING WITHIN FIELD OF PANEL
- B. 12" (MAX) HORIZONTAL AND VERTICAL SPACING BETWEEN PANEL JOINTS/EDGES AND ADJACENT ADHESIVE LOCATIONS

41 TO 60 PSF:

- A. 16" O.C. (MAX) HORIZONTAL AND VERTICAL SPACING WITHIN FIELD OF PANEL
- B. 8" (MAX) HORIZONTAL AND VERTICAL SPACING BETWEEN PANEL JOINTS/EDGES AND ADJACENT ADHESIVE LOCATIONS

NOTE: 60 PSF MAX WIND LOAD AS DETAILED. CONTACT LAMINATORS FOR INSTALLATIONS WITH WIND LOADS GREATER THAN 60 PSF.

File Name: 20200131_1PTF_Plywood_Detail_Set_R5



www.LaminatorsInc.com

877.OMEGA.77

PARTIAL SYSTEM ELEVATION

1-PIECE, TIGHT-FIT MOLDING INSTALLATION
SYSTEM OVER PLYWOOD SHEATHING

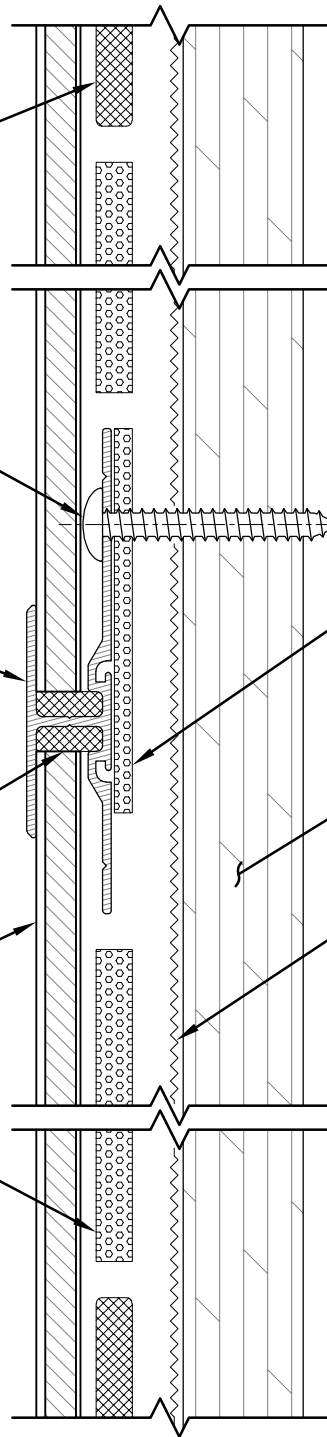
Date:
1/31/2020

Drawn By:
JJM

Dwg. No.:
1PTF-PL-EL

Rev:
05

NOTE: THIS DETAIL IS APPLICABLE TO BOTH HORIZONTAL AND VERTICAL JOINT CONDITIONS



LAMINATORS APPROVED PANEL ADHESIVE APPLIED AS SHOWN ON DETAIL 1PTF-PL-EL, TYP.

LOW-PROFILE HEAD SCREW (REFER TO FASTENER SPACING BY WIND LOAD)

H-MOLDING (PART NO. 4505X); FASTENER-SIDE EDGE OF MOLDING TO BE ALIGNED WITH TOP EDGE OF FOAM TAPE APPLIED ALONG JOINT

FOAM TAPE APPLIED ALONG PANEL JOINT; MAINTAIN VENTING AND DRAINAGE GAPS IN HORIZONTAL TAPE AS SHOWN ON DETAIL 1PTF-PL-EL

5/8" PLYWOOD SHEATHING

LAMINATORS APPROVED CAULK, TYP.

LAMINATORS APPROVED AIR AND WATER BARRIER

6mm OMEGA-LITE PANEL, TYP.

DISCONTINUOUS FOAM TAPE APPLIED BETWEEN PANEL JOINT AND ADHESIVE LOCATIONS (REQUIRED IN VERTICAL DIRECTION ONLY), TYP.

SECTION VIEW

DETAIL NOTES:

1. SPACING SHOWN BETWEEN PANELS AND SUBSTRATES AND THICKNESS OF SOME PANEL SYSTEM COMPONENTS EXAGGERATED FOR CLARITY
2. REFER TO PARTIAL SYSTEM ELEVATION DETAIL 1PTF-PL-EL FOR REQUIRED FOAM TAPE AND PANEL ADHESIVE LAYOUT

FASTENER SPACING BY WIND LOAD:

- 0 TO 60 PSF: FASTEN MOLDINGS TO PLYWOOD SHEATHING USING (1) #8 PPH SCREW AT 12" O.C.
- GREATER THAN 60 PSF: CONTACT LAMINATORS TECHNICAL SUPPORT

File Name: 20200131_1PTF_Plywood_Detail_Set_R5

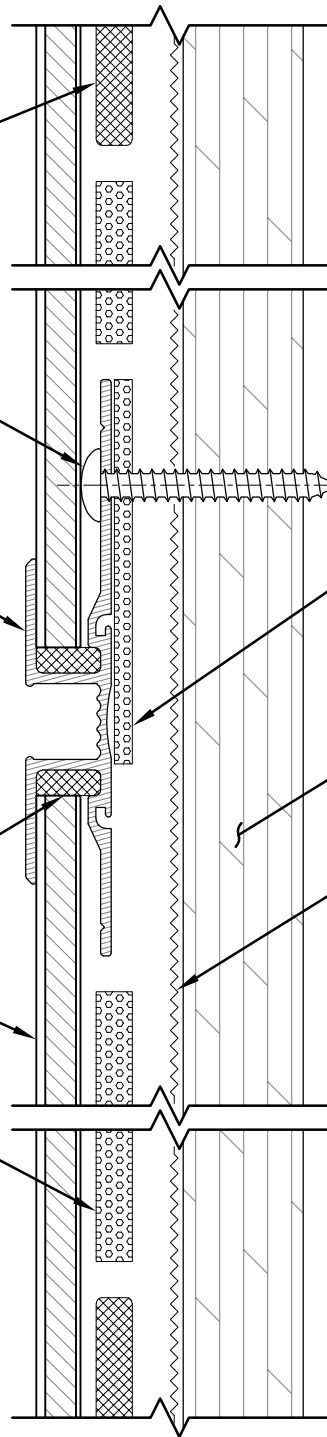


www.LaminatorsInc.com

877.OMEGA.77

TYPICAL JOINT DETAIL			
1-PIECE, TIGHT-FIT MOLDING INSTALLATION SYSTEM OVER PLYWOOD SHEATHING			
Date: 1/31/2020	Drawn By: JJM	Dwg. No.: 1PTF-PL-01	Rev: 05

NOTE: THIS DETAIL IS APPLICABLE TO BOTH HORIZONTAL AND VERTICAL JOINT CONDITIONS



LAMINATORS APPROVED PANEL ADHESIVE APPLIED AS SHOWN ON DETAIL 1PTF-PL-EL, TYP.

LOW-PROFILE HEAD SCREW (REFER TO FASTENER SPACING BY WIND LOAD)

REVEAL H-MOLDING (PART NO. 4595X); FASTENER-SIDE EDGE OF MOLDING TO BE ALIGNED WITH TOP EDGE OF FOAM TAPE APPLIED ALONG JOINT

FOAM TAPE APPLIED ALONG PANEL JOINT; MAINTAIN VENTING AND DRAINAGE GAPS IN HORIZONTAL TAPE AS SHOWN ON DETAIL 1PTF-PL-EL

5/8" PLYWOOD SHEATHING

LAMINATORS APPROVED AIR AND WATER BARRIER

LAMINATORS APPROVED CAULK, TYP.

6mm OMEGA-LITE PANEL, TYP.

DISCONTINUOUS FOAM TAPE APPLIED BETWEEN PANEL JOINT AND ADHESIVE LOCATIONS (REQUIRED IN VERTICAL DIRECTION ONLY), TYP.

SECTION VIEW

DETAIL NOTES:

1. SPACING SHOWN BETWEEN PANELS AND SUBSTRATES AND THICKNESS OF SOME PANEL SYSTEM COMPONENTS EXAGGERATED FOR CLARITY
2. REFER TO PARTIAL SYSTEM ELEVATION DETAIL 1PTF-PL-EL FOR REQUIRED FOAM TAPE AND PANEL ADHESIVE LAYOUT

FASTENER SPACING BY WIND LOAD:

- 0 TO 60 PSF: FASTEN MOLDINGS TO PLYWOOD SHEATHING USING (1) #8 PPH SCREW AT 12" O.C.
- GREATER THAN 60 PSF: CONTACT LAMINATORS TECHNICAL SUPPORT

File Name: 20200131_1PTF_Plywood_Detail_Set_R5



www.LaminatorsInc.com

877.OMEGA.77

TYPICAL REVEAL JOINT DETAIL

1-PIECE, TIGHT-FIT MOLDING INSTALLATION SYSTEM OVER PLYWOOD SHEATHING

Date: 1/31/2020	Drawn By: JJM	Dwg. No.: 1PTF-PL-01A	Rev: 05
--------------------	------------------	--------------------------	------------

DISCONTINUOUS VERTICAL FOAM TAPE APPLIED BETWEEN HORIZONTAL MOLDING AND ADHESIVE LOCATIONS AS SHOWN ON DETAIL 1PTF-PL-EL

AIR AND WATER BARRIER TO LAP OVER FLASHING IN SHINGLE FASHION

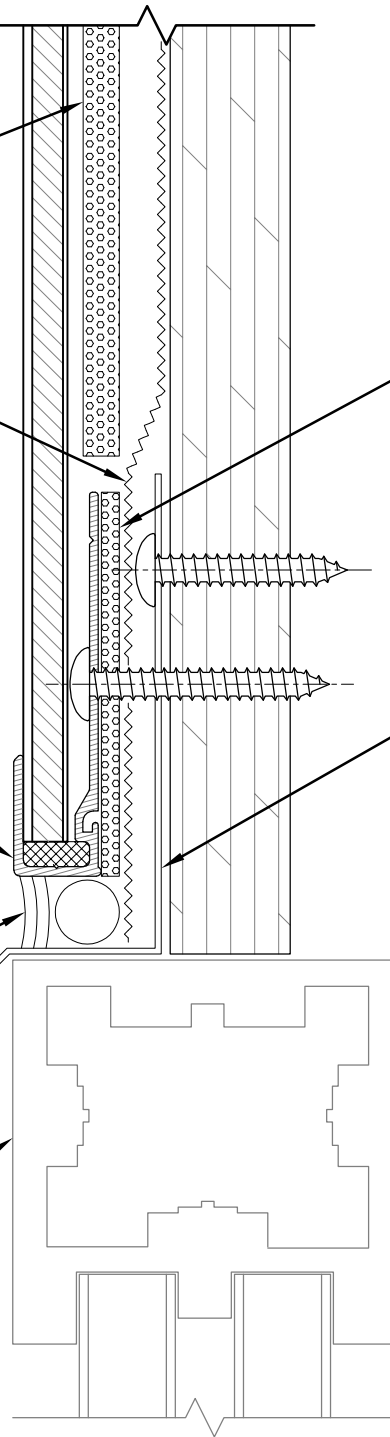
HORIZONTAL FOAM TAPE APPLIED ALONG PANEL EDGE; MAINTAIN VENTING AND DRAINAGE GAPS IN TAPE SIMILAR TO THAT SHOWN ON DETAIL 1PTF-PL-EL

METAL HEAD FLASHING MECHANICALLY FASTENED TO SHEATHING (COORDINATE W/ WINDOW SYSTEM INSTALLATION REQUIREMENTS)

J-MOLDING (PART NO. 4515X)

SEALANT JOINT W/ CLOSED-CELL BACKER ROD; PROVIDE GAPS IN SEALANT AND BACKER ROD AT FOAM TAPE VENTING LOCATIONS

WINDOW SYSTEM BY OTHERS



SECTION VIEW

DETAIL NOTES:

1. SPACING SHOWN BETWEEN PANELS AND SUBSTRATES AND THICKNESS OF SOME PANEL SYSTEM COMPONENTS EXAGGERATED FOR CLARITY
2. REFER TO PARTIAL SYSTEM ELEVATION DETAIL 1PTF-PL-EL FOR REQUIRED FOAM TAPE AND PANEL ADHESIVE LAYOUT
3. REFER TO JOINT DETAILS 1PTF-PL-01 & 1PTF-PL-01A FOR FASTENER REQUIREMENTS AND TYPICAL COMPONENTS NOT ANNOTATED

File Name: 20200131_1PTF_Plywood_Detail_Set_R5



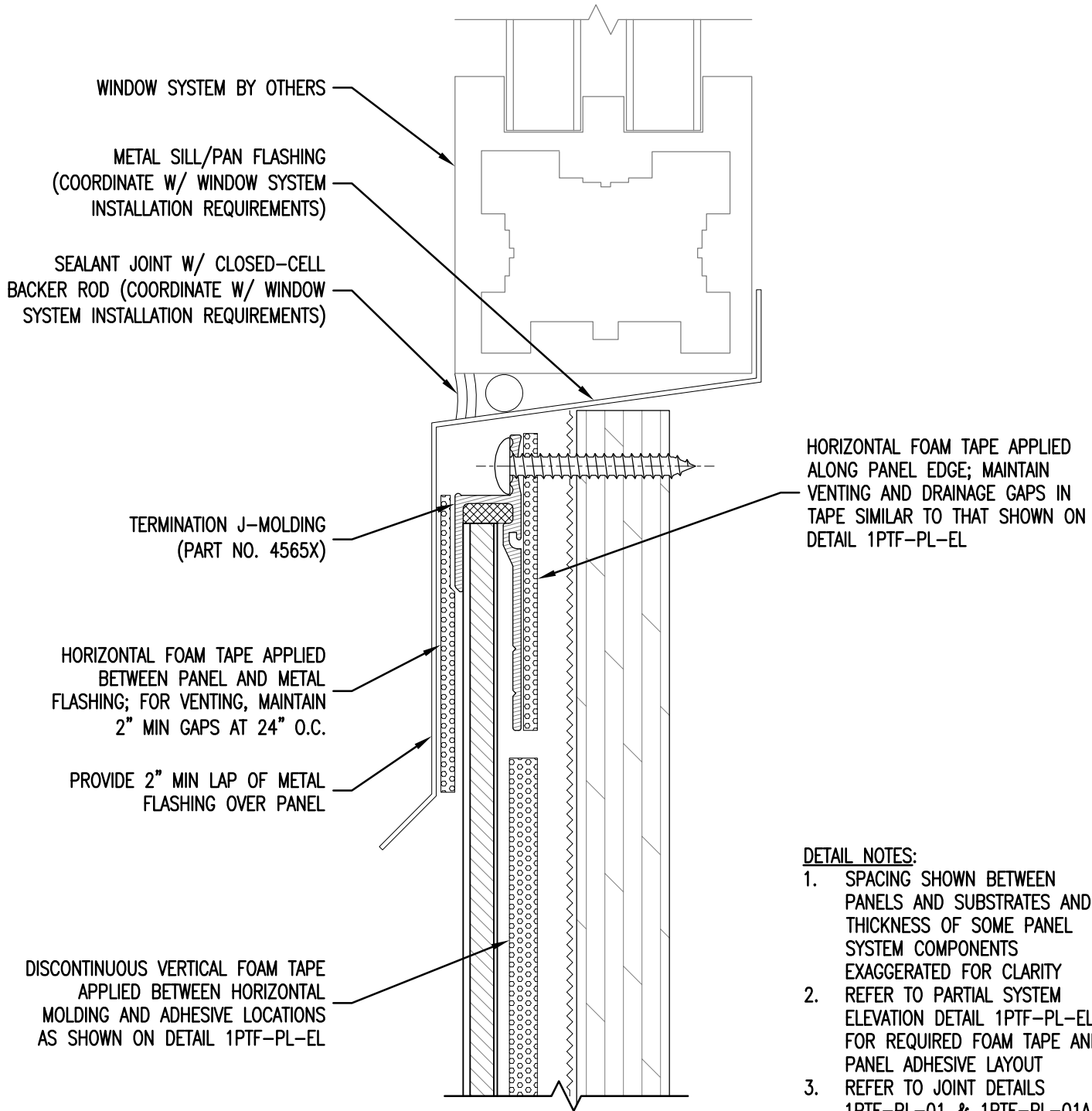
www.LaminatorsInc.com

877.OMEGA.77

TYPICAL HEAD DETAIL

1-PIECE, TIGHT-FIT MOLDING INSTALLATION SYSTEM OVER PLYWOOD SHEATHING

Date: 1/31/2020	Drawn By: JJM	Dwg. No.: 1PTF-PL-02	Rev: 05
--------------------	------------------	-------------------------	------------



WINDOW SYSTEM BY OTHERS

METAL SILL/PAN FLASHING
(COORDINATE W/ WINDOW SYSTEM
INSTALLATION REQUIREMENTS)

SEALANT JOINT W/ CLOSED-CELL
BACKER ROD (COORDINATE W/ WINDOW
SYSTEM INSTALLATION REQUIREMENTS)

TERMINATION J-MOLDING
(PART NO. 4565X)

HORIZONTAL FOAM TAPE APPLIED
BETWEEN PANEL AND METAL
FLASHING; FOR VENTING, MAINTAIN
2" MIN GAPS AT 24" O.C.

PROVIDE 2" MIN LAP OF METAL
FLASHING OVER PANEL

DISCONTINUOUS VERTICAL FOAM TAPE
APPLIED BETWEEN HORIZONTAL
MOLDING AND ADHESIVE LOCATIONS
AS SHOWN ON DETAIL 1PTF-PL-EL

HORIZONTAL FOAM TAPE APPLIED
ALONG PANEL EDGE; MAINTAIN
VENTING AND DRAINAGE GAPS IN
TAPE SIMILAR TO THAT SHOWN ON
DETAIL 1PTF-PL-EL

SECTION VIEW

DETAIL NOTES:

1. SPACING SHOWN BETWEEN PANELS AND SUBSTRATES AND THICKNESS OF SOME PANEL SYSTEM COMPONENTS EXAGGERATED FOR CLARITY
2. REFER TO PARTIAL SYSTEM ELEVATION DETAIL 1PTF-PL-EL FOR REQUIRED FOAM TAPE AND PANEL ADHESIVE LAYOUT
3. REFER TO JOINT DETAILS 1PTF-PL-01 & 1PTF-PL-01A FOR FASTENER REQUIREMENTS AND TYPICAL COMPONENTS NOT ANNOTATED

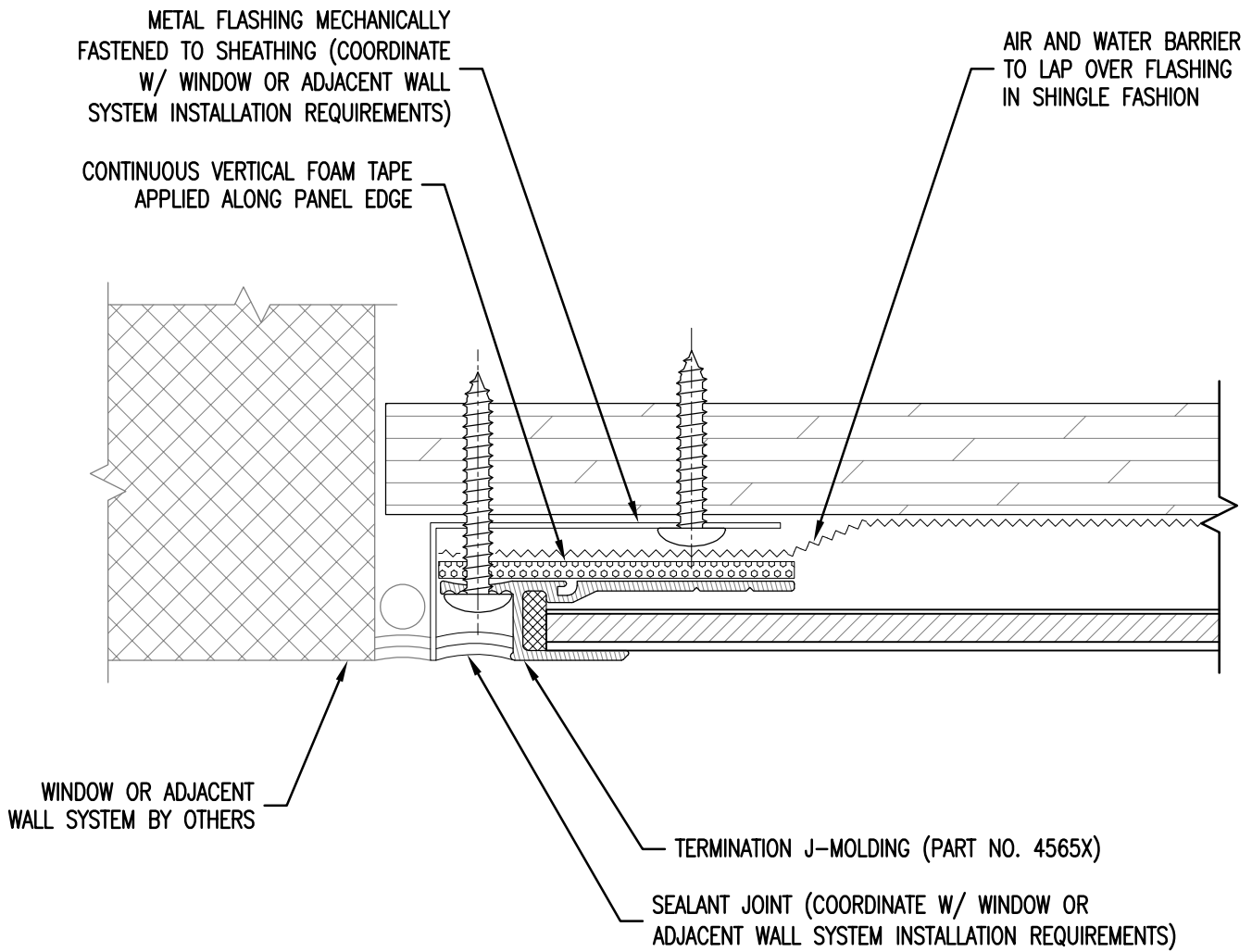
File Name: 20200131_1PTF_Plywood_Detail_Set_R5



www.LaminatorsInc.com

877.OMEGA.77

TYPICAL SILL DETAIL			
1-PIECE, TIGHT-FIT MOLDING INSTALLATION SYSTEM OVER PLYWOOD SHEATHING			
Date: 1/31/2020	Drawn By: JJM	Dwg. No.: 1PTF-PL-03	Rev: 05



PLAN SECTION VIEW

DETAIL NOTES:

1. SPACING SHOWN BETWEEN PANELS AND SUBSTRATES AND THICKNESS OF SOME PANEL SYSTEM COMPONENTS EXAGGERATED FOR CLARITY
2. REFER TO PARTIAL SYSTEM ELEVATION DETAIL 1PTF-PL-EL FOR REQUIRED FOAM TAPE AND PANEL ADHESIVE LAYOUT
3. REFER TO JOINT DETAILS 1PTF-PL-01 & 1PTF-PL-01A FOR FASTENER REQUIREMENTS AND TYPICAL COMPONENTS NOT ANNOTATED

File Name: 20200131_1PTF_Plywood_Detail_Set_R5



www.LaminatorsInc.com

877.OMEGA.77

TYPICAL JAMB / END-OF-RUN DETAIL

1-PIECE, TIGHT-FIT MOLDING INSTALLATION SYSTEM OVER PLYWOOD SHEATHING

Date:
1/31/2020

Drawn By:
JJM

Dwg. No.:
1PTF-PL-04

Rev:
05

PARAPET WALL METAL COPING AND
BLOCKING BY OTHERS

TERMINATION J-MOLDING
(PART NO. 4565X)

HORIZONTAL FOAM TAPE APPLIED
BETWEEN PANEL AND METAL
COPING; FOR VENTING, MAINTAIN
2" MIN GAPS AT 24" O.C.

PROVIDE 2" MIN LAP OF METAL
COPING SYSTEM OVER PANEL

DISCONTINUOUS VERTICAL FOAM TAPE
APPLIED BETWEEN HORIZONTAL
MOLDING AND ADHESIVE LOCATIONS
AS SHOWN ON DETAIL 1PTF-PL-EL

HORIZONTAL FOAM TAPE APPLIED
ALONG PANEL EDGE; MAINTAIN
VENTING AND DRAINAGE GAPS IN
TAPE SIMILAR TO THAT SHOWN ON
DETAIL 1PTF-PL-EL

SECTION VIEW

DETAIL NOTES:

1. SPACING SHOWN BETWEEN PANELS AND SUBSTRATES AND THICKNESS OF SOME PANEL SYSTEM COMPONENTS EXAGGERATED FOR CLARITY
2. REFER TO PARTIAL SYSTEM ELEVATION DETAIL 1PTF-PL-EL FOR REQUIRED FOAM TAPE AND PANEL ADHESIVE LAYOUT
3. REFER TO JOINT DETAILS 1PTF-PL-01 & 1PTF-PL-01A FOR FASTENER REQUIREMENTS AND TYPICAL COMPONENTS NOT ANNOTATED

File Name: 20200131_1PTF_Plywood_Detail_Set_R5



www.LaminatorsInc.com

877.OMEGA.77

TYPICAL PARAPET DETAIL

1-PIECE, TIGHT-FIT MOLDING INSTALLATION
SYSTEM OVER PLYWOOD SHEATHING

Date: 1/31/2020	Drawn By: JJM	Dwg. No.: 1PTF-PL-05	Rev: 05
--------------------	------------------	-------------------------	------------

DISCONTINUOUS VERTICAL FOAM TAPE APPLIED BETWEEN HORIZONTAL MOLDING AND ADHESIVE LOCATIONS AS SHOWN ON DETAIL 1PTF-PL-EL

AIR AND WATER BARRIER TO LAP OVER FLASHING IN SHINGLE FASHION

HORIZONTAL FOAM TAPE APPLIED ALONG PANEL EDGE; MAINTAIN VENTING AND DRAINAGE GAPS IN TAPE SIMILAR TO THAT SHOWN ON DETAIL 1PTF-PL-EL

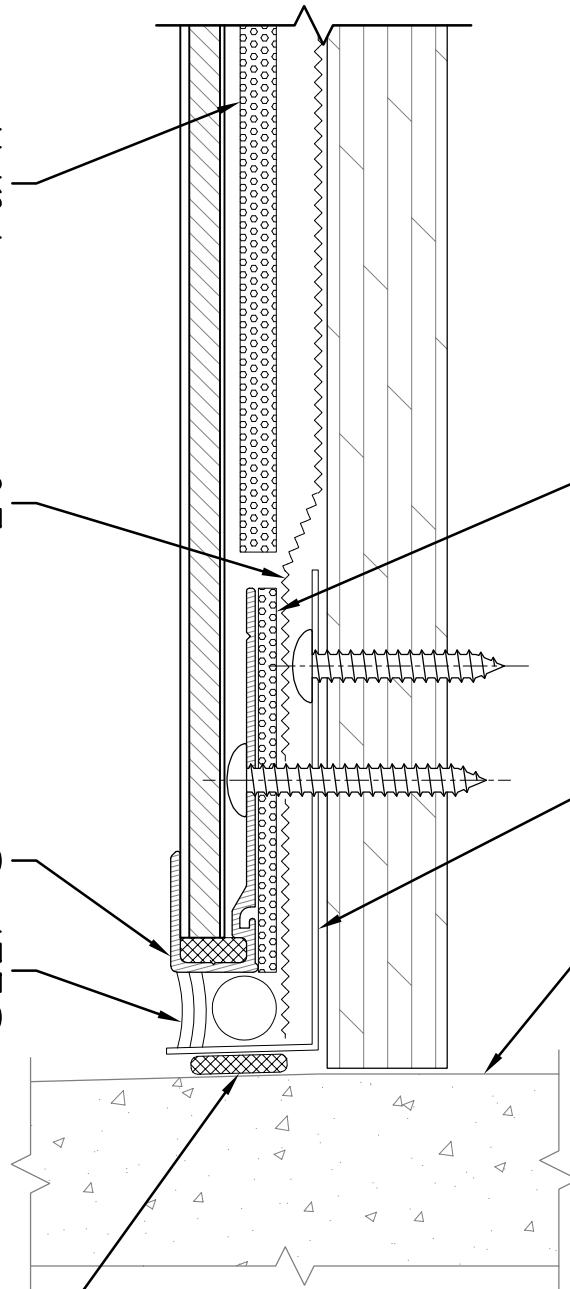
METAL BASE FLASHING MECHANICALLY FASTENED TO SHEATHING (COORDINATE W/ INSTALLATION REQUIREMENTS FOR INTERFACE WITH GRADE CONDITIONS)

J-MOLDING (PART NO. 4515X)

SEALANT JOINT W/ CLOSED-CELL BACKER ROD; PROVIDE GAPS IN SEALANT AND BACKER ROD AT FOAM TAPE VENTING LOCATIONS)

GRADE

CONTINUOUS BUTYL SEALANT BETWEEN METAL FLASHING AND GRADE



SECTION VIEW

DETAIL NOTES:

1. SPACING SHOWN BETWEEN PANELS AND SUBSTRATES AND THICKNESS OF SOME PANEL SYSTEM COMPONENTS EXAGGERATED FOR CLARITY
2. REFER TO PARTIAL SYSTEM ELEVATION DETAIL 1PTF-PL-EL FOR REQUIRED FOAM TAPE AND PANEL ADHESIVE LAYOUT
3. REFER TO JOINT DETAILS 1PTF-PL-01 & 1PTF-PL-01A FOR FASTENER REQUIREMENTS AND TYPICAL COMPONENTS NOT ANNOTATED

File Name: 20200131_1PTF_Plywood_Detail_Set_R5



www.LaminatorsInc.com

877.OMEGA.77

TYPICAL GRADE DETAIL

1-PIECE, TIGHT-FIT MOLDING INSTALLATION SYSTEM OVER PLYWOOD SHEATHING

Date: 1/31/2020	Drawn By: JJM	Dwg. No.: 1PTF-PL-06	Rev: 05
--------------------	------------------	-------------------------	------------

CONTINUOUS BEAD (1/4" MIN, 3/8" MAX) OF LAMINATORS APPROVED PANEL ADHESIVE APPLIED PRIOR TO PLACEMENT OF PANEL

12" MAX.

CONTINUOUS FOAM TAPE ADJACENT TO PANEL ADHESIVE

PANEL TO BE SEQUENCED FOR INSTALLATION PRIOR TO INSIDE CORNER / DRIP CAP MOLDING

LAMINATORS APPROVED CAULK APPLIED AT INTERFACE BETWEEN INSIDE CORNER MOLDING AND FACE OF ADJACENT PANEL

INSIDE CORNER / DRIP CAP MOLDING (PART NO. 4525X) OR J-MOLDING (PART NO. 4515X)

CONTINUOUS VERTICAL FOAM TAPE APPLIED ALONG INSIDE CORNER ON SIDE TO RECEIVE MOLDING

LAMINATORS APPROVED PANEL ADHESIVE APPLIED AS SHOWN ON DETAIL 1PTF-PL-EL, TYP.

3" MAX.

DETAIL NOTES:

1. SPACING SHOWN BETWEEN PANELS AND SUBSTRATES AND THICKNESS OF SOME PANEL SYSTEM COMPONENTS EXAGGERATED FOR CLARITY
2. REFER TO PARTIAL SYSTEM ELEVATION DETAIL 1PTF-PL-EL FOR REQUIRED FOAM TAPE AND PANEL ADHESIVE LAYOUT
3. REFER TO JOINT DETAILS 1PTF-PL-01 & 1PTF-PL-01A FOR FASTENER REQUIREMENTS AND TYPICAL COMPONENTS NOT ANNOTATED

PLAN SECTION VIEW

File Name: 20200131_1PTF_Plywood_Detail_Set_R5



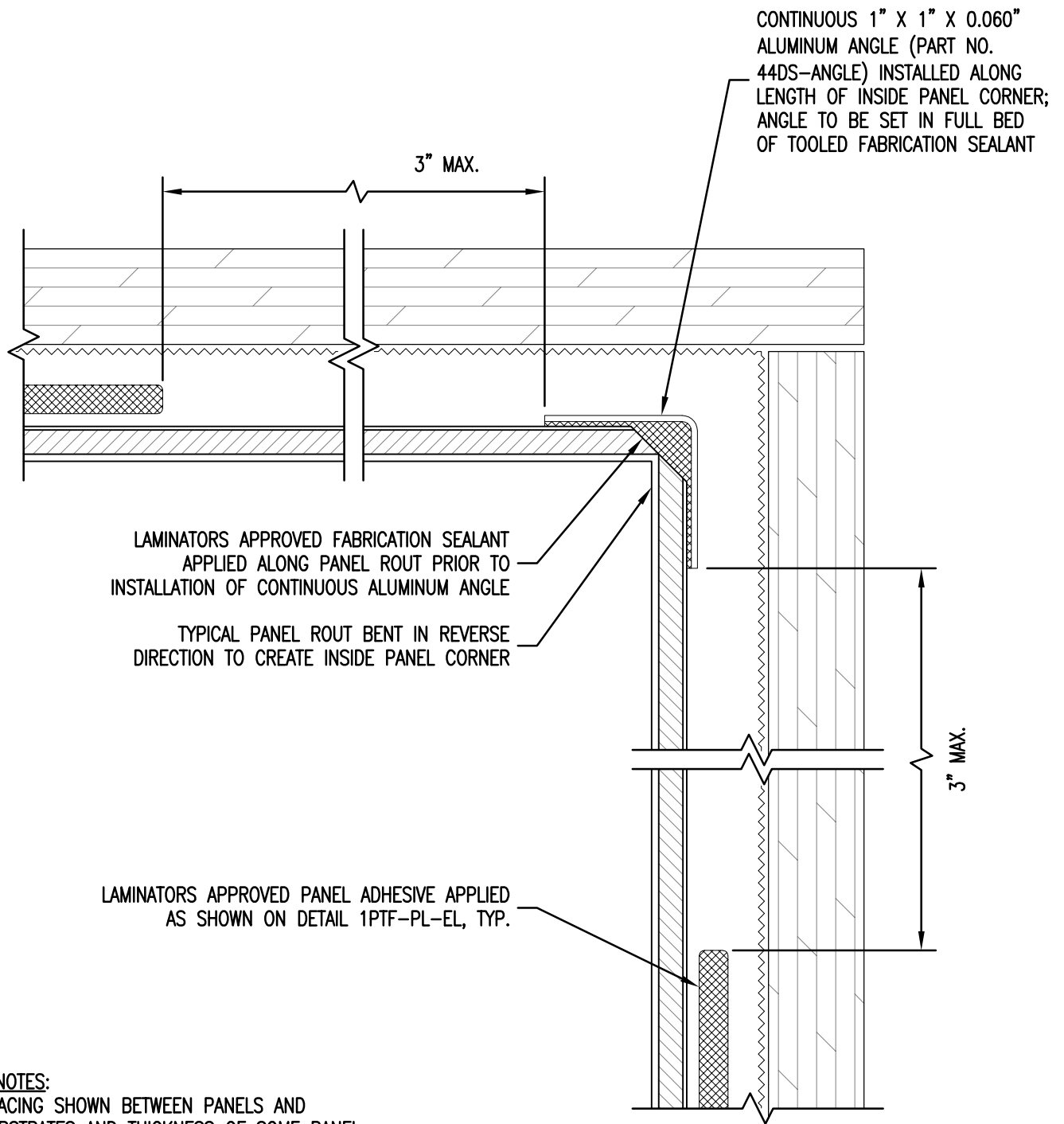
www.LaminatorsInc.com

877.OMEGA.77

TYPICAL INSIDE CORNER DETAIL

1-PIECE, TIGHT-FIT MOLDING INSTALLATION SYSTEM OVER PLYWOOD SHEATHING

Date: 1/31/2020	Drawn By: JJM	Dwg. No.: 1PTF-PL-07	Rev: 05
--------------------	------------------	-------------------------	------------



CONTINUOUS 1" X 1" X 0.060" ALUMINUM ANGLE (PART NO. 44DS-ANGLE) INSTALLED ALONG LENGTH OF INSIDE PANEL CORNER; ANGLE TO BE SET IN FULL BED OF TOOLED FABRICATION SEALANT

3" MAX.

LAMINATORS APPROVED FABRICATION SEALANT APPLIED ALONG PANEL ROUT PRIOR TO INSTALLATION OF CONTINUOUS ALUMINUM ANGLE

TYPICAL PANEL ROUT BENT IN REVERSE DIRECTION TO CREATE INSIDE PANEL CORNER

LAMINATORS APPROVED PANEL ADHESIVE APPLIED AS SHOWN ON DETAIL 1PTF-PL-EL, TYP.

3" MAX.

PLAN SECTION VIEW

DETAIL NOTES:

1. SPACING SHOWN BETWEEN PANELS AND SUBSTRATES AND THICKNESS OF SOME PANEL SYSTEM COMPONENTS EXAGGERATED FOR CLARITY
2. REFER TO PARTIAL SYSTEM ELEVATION DETAIL 1PTF-PL-EL FOR REQUIRED FOAM TAPE AND PANEL ADHESIVE LAYOUT
3. REFER TO JOINT DETAILS 1PTF-PL-01 & 1PTF-PL-01A FOR FASTENER REQUIREMENTS AND TYPICAL COMPONENTS NOT ANNOTATED

File Name: 20200131_1PTF_Plywood_Detail_Set_R5



www.LaminatorsInc.com

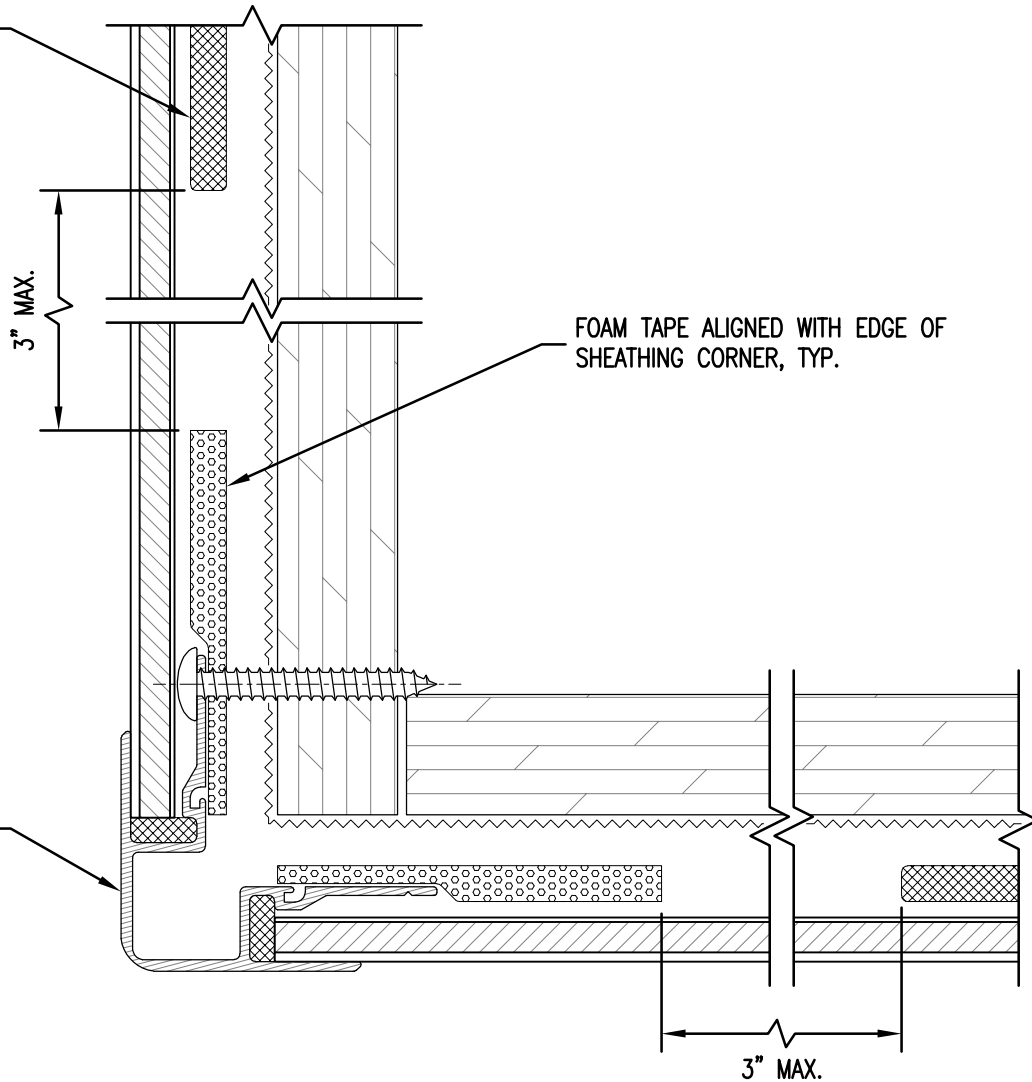
877.OMEGA.77

ALTERNATE INSIDE CORNER DETAIL

1-PIECE, TIGHT-FIT MOLDING INSTALLATION SYSTEM OVER PLYWOOD SHEATHING

Date: 1/31/2020	Drawn By: JJM	Dwg. No.: 1PTF-PL-07A	Rev: 05
--------------------	------------------	--------------------------	------------

LAMINATORS APPROVED
 PANEL ADHESIVE APPLIED
 AS SHOWN ON DETAIL
 1PTF-PL-EL, TYP.



OUTSIDE CORNER MOLDING
 (PART NO. 4535X)

FOAM TAPE ALIGNED WITH EDGE OF
 SHEATHING CORNER, TYP.

PLAN SECTION VIEW

DETAIL NOTES:

1. SPACING SHOWN BETWEEN PANELS AND SUBSTRATES AND THICKNESS OF SOME PANEL SYSTEM COMPONENTS EXAGGERATED FOR CLARITY
2. REFER TO PARTIAL SYSTEM ELEVATION DETAIL 1PTF-PL-EL FOR REQUIRED FOAM TAPE AND PANEL ADHESIVE LAYOUT
3. REFER TO JOINT DETAILS 1PTF-PL-01 & 1PTF-PL-01A FOR FASTENER REQUIREMENTS AND TYPICAL COMPONENTS NOT ANNOTATED

NOTE: THIS DETAIL IS NOT TO BE USED FOR FASCIA-TO-SOFFIT TRANSITIONS

File Name: 20200131_1PTF_Plywood_Detail_Set_R5



www.LaminatorsInc.com

877.OMEGA.77

TYPICAL OUTSIDE CORNER DETAIL

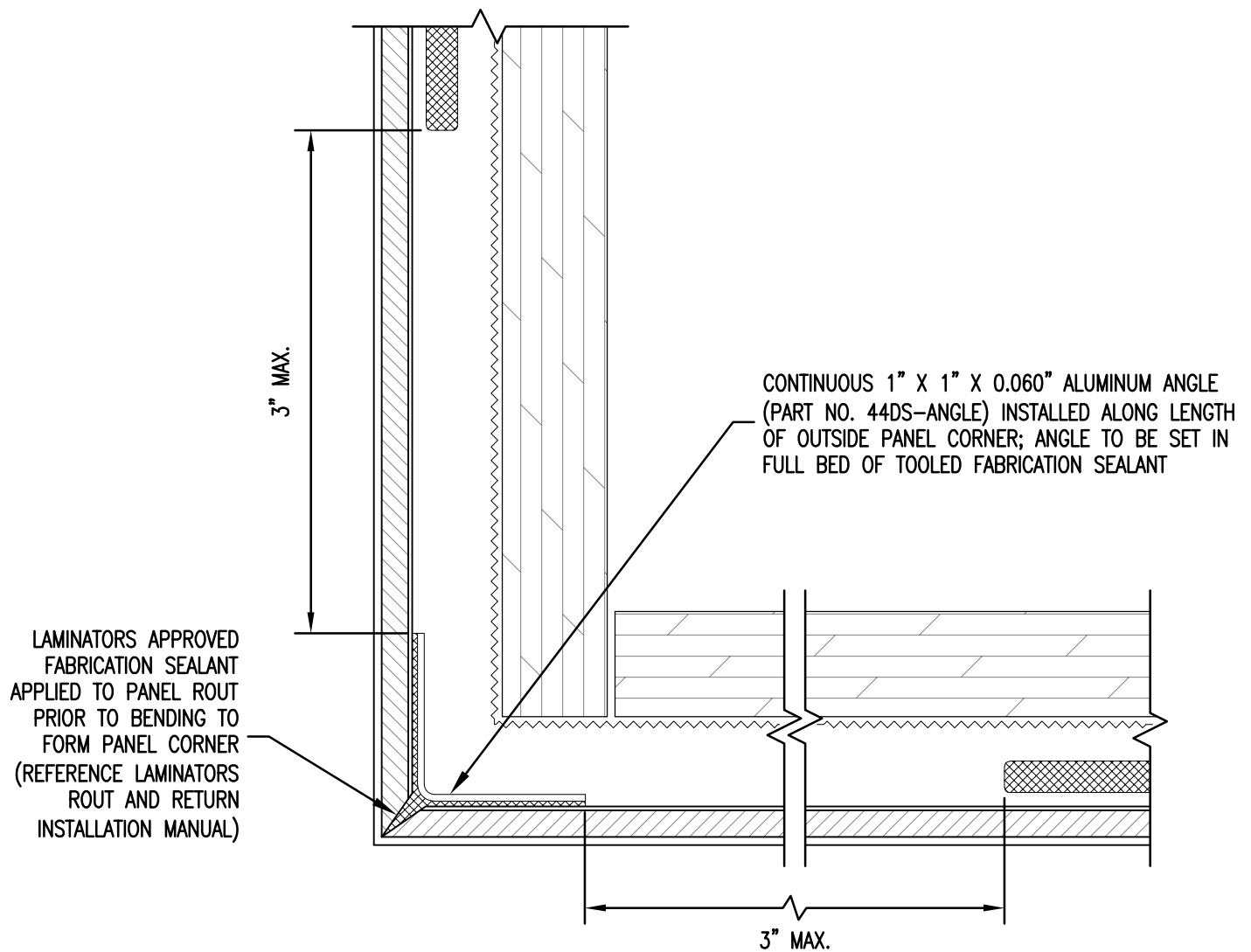
1-PIECE, TIGHT-FIT MOLDING INSTALLATION
 SYSTEM OVER PLYWOOD SHEATHING

Date:
 1/31/2020

Drawn By:
 JJM

Dwg. No.:
 1PTF-PL-08

Rev:
 05



PLAN SECTION VIEW

DETAIL NOTES:

1. SPACING SHOWN BETWEEN PANELS AND SUBSTRATES AND THICKNESS OF SOME PANEL SYSTEM COMPONENTS EXAGGERATED FOR CLARITY
2. REFER TO PARTIAL SYSTEM ELEVATION DETAIL 1PTF-PL-EL FOR REQUIRED FOAM TAPE AND PANEL ADHESIVE LAYOUT
3. REFER TO JOINT DETAILS 1PTF-PL-01 & 1PTF-PL-01A FOR FASTENER REQUIREMENTS AND TYPICAL COMPONENTS NOT ANNOTATED

NOTE: THIS DETAIL IS NOT TO BE USED FOR FASCIA-TO-SOFFIT TRANSITIONS

File Name: 20200131_1PTF_Plywood_Detail_Set_R5



www.LaminatorsInc.com

877.OMEGA.77

ALTERNATE OUTSIDE CORNER DETAIL

1-PIECE, TIGHT-FIT MOLDING INSTALLATION SYSTEM OVER PLYWOOD SHEATHING

Date: 1/31/2020	Drawn By: JJM	Dwg. No.: 1PTF-PL-08A	Rev: 05
--------------------	------------------	--------------------------	------------

HORIZONTAL FOAM TAPE ALIGNED WITH EDGE OF SHEATHING CORNER; MAINTAIN VENTING AND DRAINAGE GAPS IN TAPE SIMILAR TO THAT SHOWN ON DETAIL 1PTF-PL-EL

J-MOLDING (PART NO. 4515X), TYP. ALIGN BOTTOM OF MOLDING WITH ADJACENT MOLDING OR LOWER

1/8" NOM.

CONTINUOUS FOAM TAPE ALIGNED WITH EDGE OF SHEATHING CORNER

SECTION VIEW

DETAIL NOTES:

1. SPACING SHOWN BETWEEN PANELS AND SUBSTRATES AND THICKNESS OF SOME PANEL SYSTEM COMPONENTS EXAGGERATED FOR CLARITY
2. REFER TO PARTIAL SYSTEM ELEVATION DETAIL 1PTF-PL-EL FOR REQUIRED FOAM TAPE AND PANEL ADHESIVE LAYOUT
3. REFER TO JOINT DETAILS 1PTF-PL-01 & 1PTF-PL-01A FOR FASTENER REQUIREMENTS AND TYPICAL COMPONENTS NOT ANNOTATED

NOTE: FOR INSTALLATION OF FASCIA-TO-SOFFIT TRANSITIONS OVER CURVED SUBSTRATES, REFER TO OMEGA-FLEX INSTALLATION MANUAL FOR INSTRUCTIONS ON RELIEF CUTTING AND ROLLING MOLDINGS

File Name: 20200131_1PTF_Plywood_Detail_Set_R5



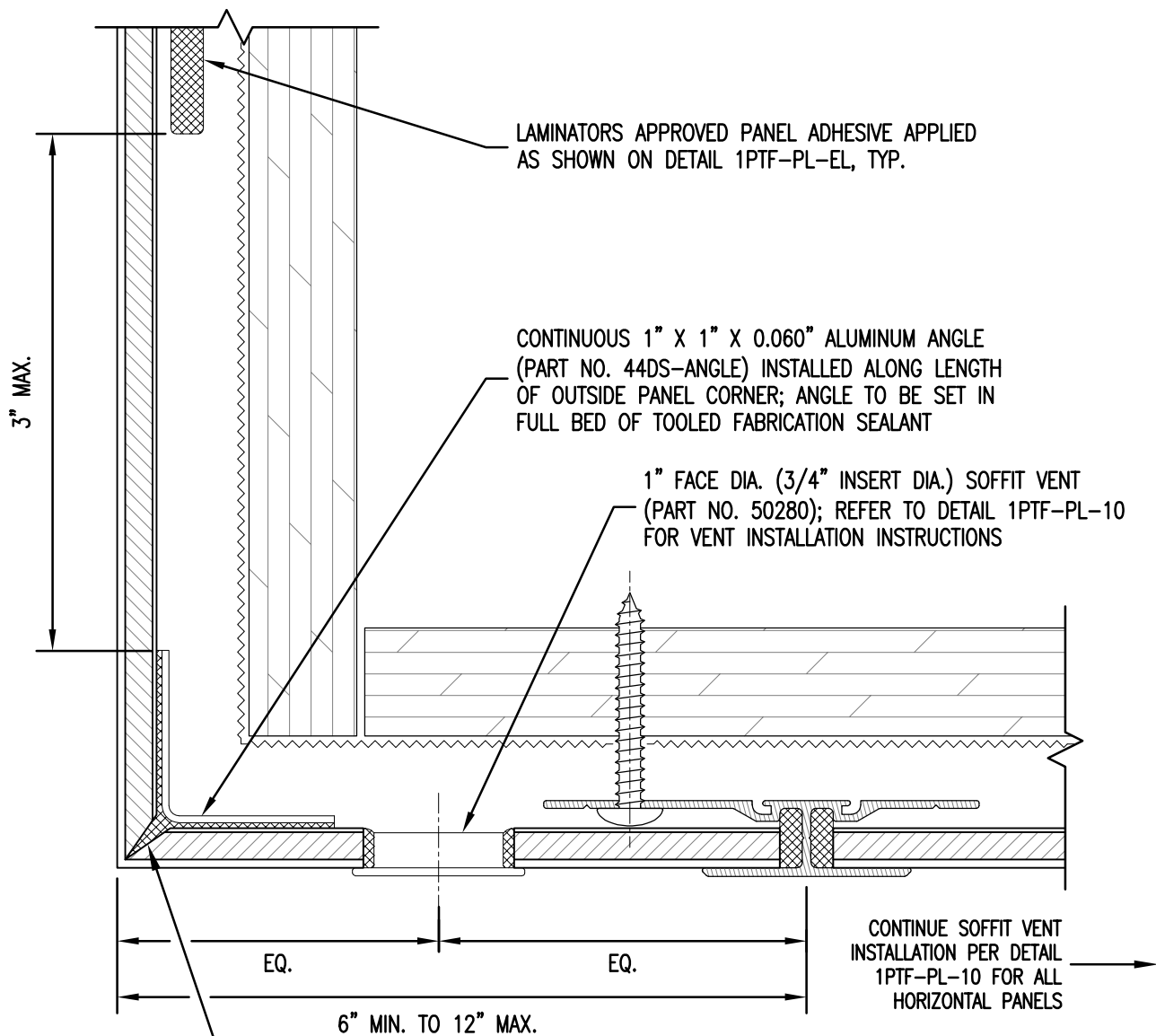
www.LaminatorsInc.com

877.OMEGA.77

TYPICAL FASCIA-TO-SOFFIT TRANSITION DETAIL

1-PIECE, TIGHT-FIT MOLDING INSTALLATION SYSTEM OVER PLYWOOD SHEATHING

Date: 1/31/2020	Drawn By: JJM / JWS	Dwg. No.: 1PTF-PL-09	Rev: 05
--------------------	------------------------	-------------------------	------------



LAMINATORS APPROVED FABRICATION SEALANT APPLIED TO PANEL ROUT PRIOR TO BENDING TO FORM PANEL CORNER (REFERENCE LAMINATORS ROUT AND RETURN INSTALLATION MANUAL)

DETAIL NOTES:

1. SPACING SHOWN BETWEEN PANELS AND SUBSTRATES AND THICKNESS OF SOME PANEL SYSTEM COMPONENTS EXAGGERATED FOR CLARITY
2. REFER TO PARTIAL SYSTEM ELEVATION DETAIL 1PTF-PL-EL FOR REQUIRED FOAM TAPE AND PANEL ADHESIVE LAYOUT
3. REFER TO JOINT DETAILS 1PTF-PL-01 & 1PTF-PL-01A FOR FASTENER REQUIREMENTS AND TYPICAL COMPONENTS NOT ANNOTATED

File Name: 20200131_1PTF_Plywood_Detail_Set_R5



www.LaminatorsInc.com

877.OMEGA.77

ALTERNATE FASCIA-TO-SOFFIT TRANSITION

1-PIECE, TIGHT-FIT MOLDING INSTALLATION SYSTEM OVER PLYWOOD SHEATHING

Date:
1/31/2020

Drawn By:
JJM

Dwg. No.:
1PTF-PL-09A

Rev:
05

STEP 1: DRILL 7/8" DIA. HOLE IN PANEL FOR INSTALLATION OF SOFFIT BUTTON VENT

SUBSTRATE SIDE

7/8"

STEP 2: EDGE SEAL THE PERIMETER OF THE 7/8" DIA. HOLE USING LAMINATORS APPROVED FABRICATION (OR ROOFING GRADE) SEALANT PRIOR TO INSERTING THE VENT (SEALANT MUST BE PUSHED INTO THE FLUTES OF THE PANEL CORE)

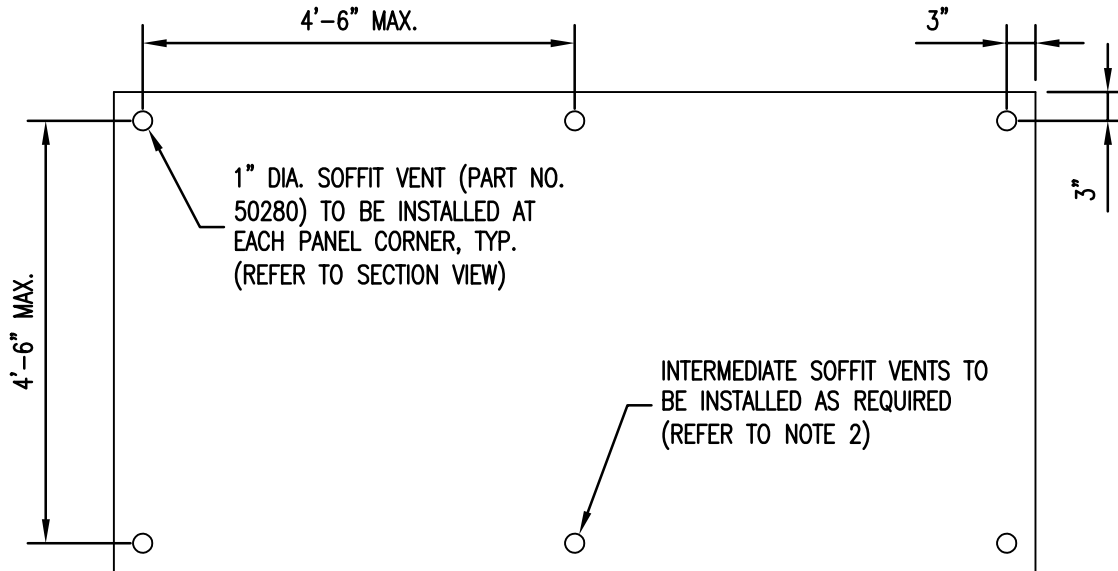
STEP 3: INSTALL AN ADDITIONAL BEAD OF LAMINATORS APPROVED FABRICATION (OR ROOFING GRADE) SEALANT AROUND THE FLANGE OF THE VENT PRIOR TO INSERTING INTO THE HOLE

6mm OMEGA-LITE PANEL, TYP.

1" FACE DIA. (3/4" INSERT DIA.) SOFFIT VENT (PART NO. 50280)

STEP 4: INSERT THE VENT INTO THE DRILLED HOLE WITH A SLIGHT TWISTING MOTION TO ENSURE COMPLETE COVERAGE OF THE SEALANT AND ADHESION TO BOTH THE PANEL AND THE VENT

SECTION VIEW



PLAN VIEW

NOTES:

1. SPACING OF VENTS SHALL NOT EXCEED 4'-6" ALONG ANY PANEL EDGE.
2. FOR PANEL EDGE DIMENSIONS LONGER THAN 4'-6", INTERMEDIATE VENTS SHALL BE INSTALLED WITH EQUAL SPACING SO THAT NO DISTANCE BETWEEN VENTS (MEASURED CENTERLINE TO CENTERLINE) EXCEEDS 4'-6".
3. FOR ANY EDGE DIMENSION 12" AND SMALLER, A SINGLE VENT MAY BE INSTALLED ALONG THE CENTERLINE OF THE PANEL EDGE IN PLACE OF INSTALLATION OF VENTS AT EACH PANEL CORNER.
4. CONTACT LAMINATORS TECHNICAL SUPPORT FOR ADDITIONAL INFORMATION ON REQUIRED SOFFIT VENT INSTALLATION FOR UNIQUE PANEL GEOMETRIES.

File Name: 20200131_1PTF_Plywood_Detail_Set_R5



www.LaminatorsInc.com

877.OMEGA.77

SOFFIT VENT REQUIREMENTS

1-PIECE, TIGHT-FIT MOLDING INSTALLATION SYSTEM OVER PLYWOOD SHEATHING

Date:
1/31/2020

Drawn By:
JJM

Dwg. No.:
1PTF-PL-10

Rev:
05