

## IMPORTANT NOTICE

The following document is NOT comprehensive for design, bidding, or installation when used in isolation. Please refer to all related documents in their entirety for complete information regarding this ACM panel system. Such documents include, but may not be limited to, Technical Guides, Architectural Color Chart, Approved Materials List, Systems Guides, Technical Bulletins, Technical Data Sheets, CAD Drawings, Specifications, and Submittals. Visit [LaminatorsInc.com](http://LaminatorsInc.com) for information on the latest documents regarding this panel system.

To consult directly with one of our Professional Engineers regarding our ACM panel systems, contact Laminators Technical Support between the hours of 8:00am – 5:00pm EST:

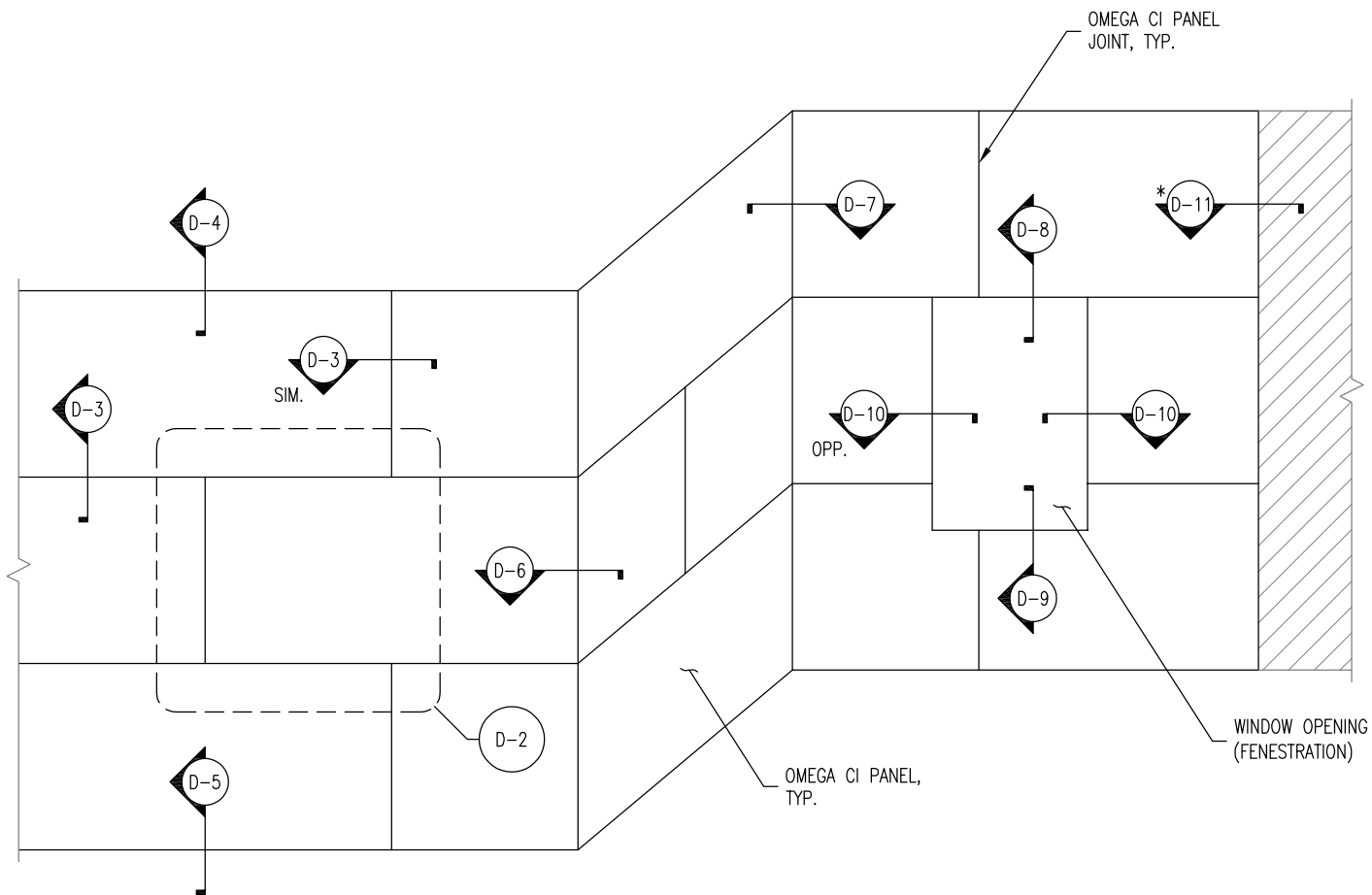
800.523.2347

[LaminatorsInc.com](http://LaminatorsInc.com)

[engineering@laminatorsinc.com](mailto:engineering@laminatorsinc.com)

DRAWING INDEX – OCI-SF-GYP DETAIL SET (Rev 02, 03/30/2020)

DWG NO.	TITLE	REV DATE	REV	CHANGE FROM PREVIOUS REV
D-1	Overall Elevation	3/30/2020	02	Title block modified
D-2	Layout and Fastening Requirements	3/30/2020	02	Title block modified and note 2B added
D-3	Joint Detail	3/30/2020	02	Title block modified
D-4	Top of Wall Detail	3/30/2020	02	Title block modified
D-5	Base of Wall Detail	3/30/2020	02	Title block modified
D-6	Outside Corner Detail	3/30/2020	02	Title block modified
D-7	Inside Corner Detail	3/30/2020	02	Title block modified
D-8	Window Head Detail	3/30/2020	02	Title block modified
D-9	Window Sill Detail	3/30/2020	02	Title block modified
D-10	Window Jamb Detail	3/30/2020	02	Title block modified
D-11.1	Vertical Edge Detail (Adjacent to New)	3/30/2020	02	Title block modified
D-11.2	Vertical Edge Detail (Adjacent to Existing)	3/30/2020	02	Title block modified



**OVERALL ELEVATION**

**GENERAL NOTES:**

1. OMEGA CI (PART NO. OCI-2.1-48) INSTALLATION DETAILS PROVIDED ONLY FOR FIRE-RATED ASSEMBLIES WITH EXTERIOR-GRADE GYPSUM SHEATHING OVER 18 GA. (MIN) STEEL STUD FRAMING (CONTACT LAMINATORS TECHNICAL SUPPORT FOR INSTALLATION OVER ALTERNATE EXTERIOR WALL ASSEMBLIES)
2. INSTALLATION OF OMEGA CI OVER OPEN FRAMING (I.E. WITHOUT SHEATHING) IS NOT PERMITTED
3. OMEGA CI STANDARD PANEL THICKNESS IS 2.1 INCH
4. REFER TO D-2 FOR PANEL LAYOUT AND FASTENING REQUIREMENTS
5. \* DENOTES SECTIONS WITH AT LEAST (2) CONFIGURATIONS AVAILABLE (EX. D-11.1, D-11.2, ETC)

**IMPORTANT NOTICE**

PROJECT-SPECIFIC COMPONENTS AND CLADDING WIND LOADS (REQUIRED STRENGTH,  $R_r$ ) SHALL NOT EXCEED AVAILABLE LOAD-CARRYING CAPACITY OF RIGID INSULATION PANELS (ALLOWABLE STRENGTH,  $R_n/\Omega$ ) OF 60 PSF

- A. PROJECT-SPECIFIC COMPONENTS AND CLADDING WIND LOADS (REFERRED TO AS WIND LOADS IN EL-2.0, 2.1, 3.0, & 3.1) ARE TO BE DETERMINED BY THE DESIGN PROFESSIONAL OF RECORD
- B. AVAILABLE LOAD-CARRYING CAPACITY OF RIGID INSULATION PANELS (60 PSF) IS BASED ON ALLOWABLE STRENGTH DESIGN (ASD) METHOD
- C. FOR PROJECT-SPECIFIC COMPONENTS AND CLADDING WIND LOADS GREATER THAN 60 PSF, CONTACT LAMINATORS TECHNICAL SUPPORT FOR PROJECT-SPECIFIC DETAILING REQUIREMENTS



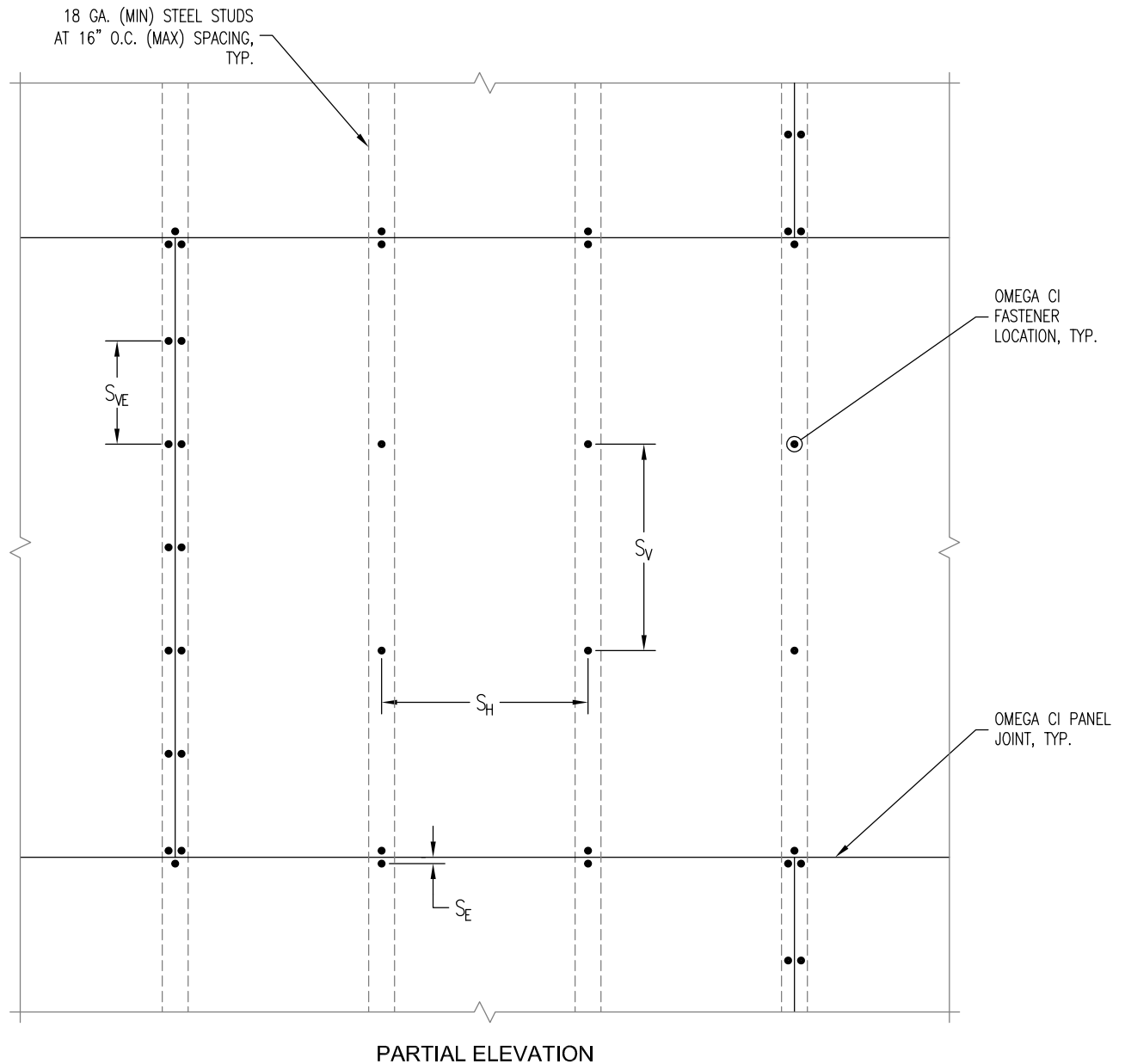
www.LaminatorsInc.com

800.523.2347

**OVERALL ELEVATION**

**OMEGA CI RIGID INSULATION PANELS  
OVER STEEL STUD FRAMING WITH GYPSUM SHEATHING**

Date: 3/30/2020	Drawn By: JJM	Detail Set: OCI-SF-GYP	Dwg. No.: D-1	Rev: 02
--------------------	------------------	---------------------------	------------------	------------



**PARTIAL ELEVATION**

**OMEGA CI RIGID INSULATION PANEL INSTALLATION:**

1. LAYOUT REQUIREMENTS:
  - A. ORIENT PANELS HORIZONTALLY IN A RUNNING BOND PATTERN WITH A SINGLE STUD (MIN) JOINT OFFSET
  - B. ALIGN ALL VERTICAL PANEL EDGES WITH CENTERLINE OF STUD FRAMING MEMBERS
  - C. MAINTAIN 1/8" GAP BETWEEN ADJACENT PANELS TO ALLOW FOR THERMAL EXPANSION OF PANEL PLYWOOD SHEATHING LAYER
2. FASTENING REQUIREMENTS:
  - A. FASTEN OMEGA CI (PART NO. OCI-2.1-48) TO EXTERIOR WALL ASSEMBLY USING 1/4" X 4" PANCAKE HEAD SELF-DRILLING SCREWS (PART NO. OCI-FASTENER-4"WOOD/STEEL)
  - B. THICKER VERSIONS OF OMEGA CI REQUIRE LONGER SCREWS (CONTACT LAMINATORS TECHNICAL SUPPORT FOR ADDITIONAL INFORMATION REGARDING SCREW SIZING)
  - C. ENSURE FASTENERS FULLY ENGAGE STUD FLANGES
  - D. FASTENER SPACING TO BE BASED ON WIND LOADS
    - WIND LOADS UP TO 60 PSF (ASD):
      - HORIZONTAL SPACING WITHIN FIELD OF PANEL ( $S_H$ ): 16" O.C. (MAX) TO MATCH STUD SPACING
      - VERTICAL SPACING WITHIN FIELD OF PANEL ( $S_V$ ): 16" O.C. (MAX)
      - VERTICAL SPACING ALONG EDGE OF PANEL ( $S_{VE}$ ): 8" O.C. (MAX)
      - FASTENER EDGE DISTANCE ( $S_E$ ): 1/4" (MIN) TO 2" (MAX)
  - E. CONTACT LAMINATORS TECHNICAL SUPPORT FOR INSTALLATION REQUIREMENTS WITH STUD SPACING GREATER THAN 16" O.C.



www.LaminatorsInc.com

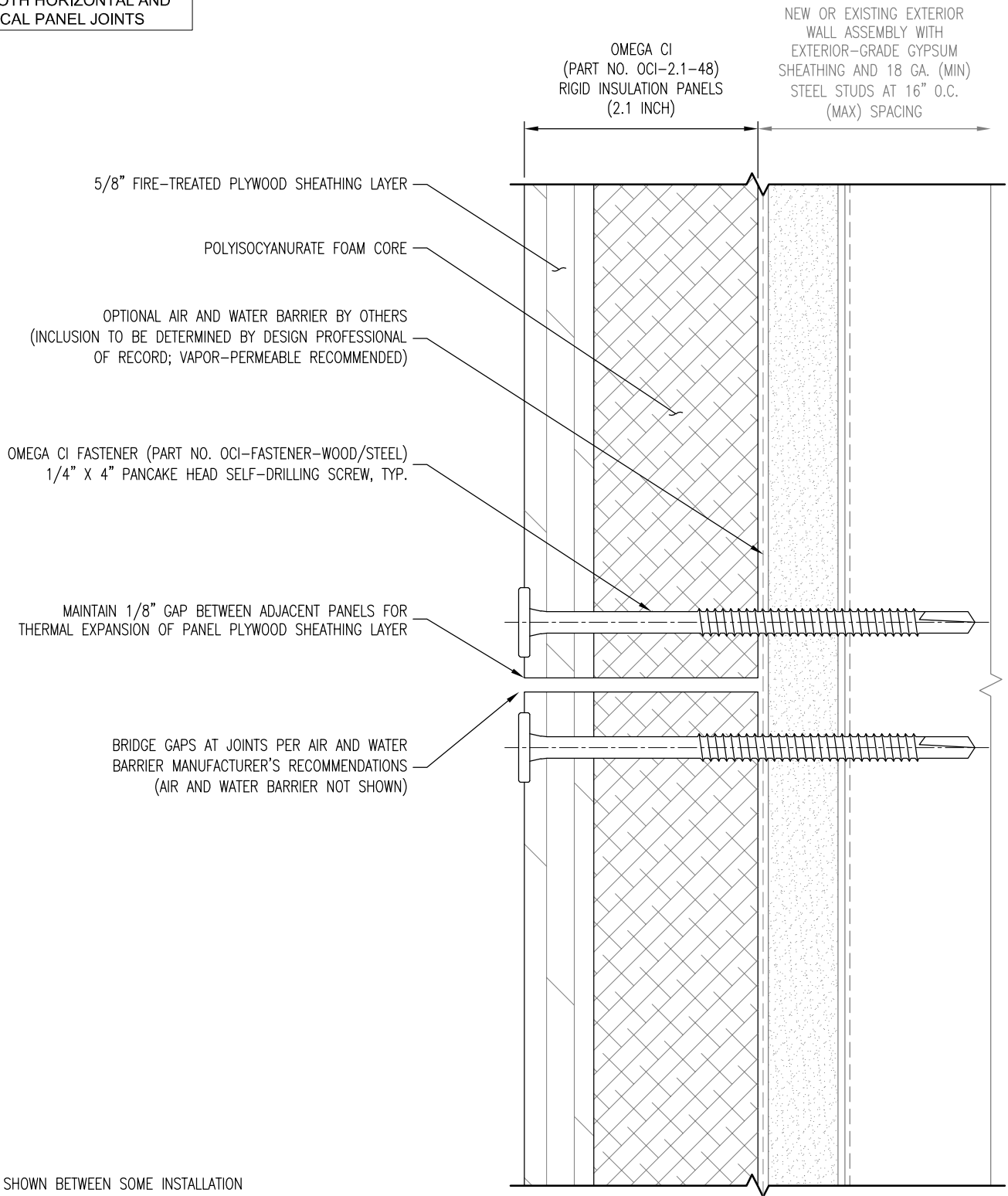
800.523.2347

**LAYOUT AND FASTENING REQUIREMENTS**

**OMEGA CI RIGID INSULATION PANELS  
OVER STEEL STUD FRAMING WITH GYPSUM SHEATHING**

Date: 3/30/2020	Drawn By: JJM	Detail Set: OCI-SF-GYP	Dwg. No.: D-2	Rev: 02
--------------------	------------------	---------------------------	------------------	------------

NOTE: THIS DETAIL IS APPLICABLE  
ALONG BOTH HORIZONTAL AND  
VERTICAL PANEL JOINTS



OPTIONAL AIR AND WATER BARRIER BY OTHERS  
(INCLUSION TO BE DETERMINED BY DESIGN PROFESSIONAL  
OF RECORD; VAPOR-PERMEABLE RECOMMENDED)

OMEGA CI FASTENER (PART NO. OCI-FASTENER-WOOD/STEEL)  
1/4" X 4" PANCAKE HEAD SELF-DRILLING SCREW, TYP.

MAINTAIN 1/8" GAP BETWEEN ADJACENT PANELS FOR  
THERMAL EXPANSION OF PANEL PLYWOOD SHEATHING LAYER

BRIDGE GAPS AT JOINTS PER AIR AND WATER  
BARRIER MANUFACTURER'S RECOMMENDATIONS  
(AIR AND WATER BARRIER NOT SHOWN)

**SECTION**

**DETAIL NOTES:**

1. SPACING SHOWN BETWEEN SOME INSTALLATION SYSTEM COMPONENTS EXAGGERATED FOR CLARITY
2. AIR AND WATER BARRIER APPLIED TO SURFACE OF OMEGA CI TO BE VAPOR PERMEABLE
3. REFER TO D-2 FOR LAYOUT AND FASTENING REQUIREMENTS

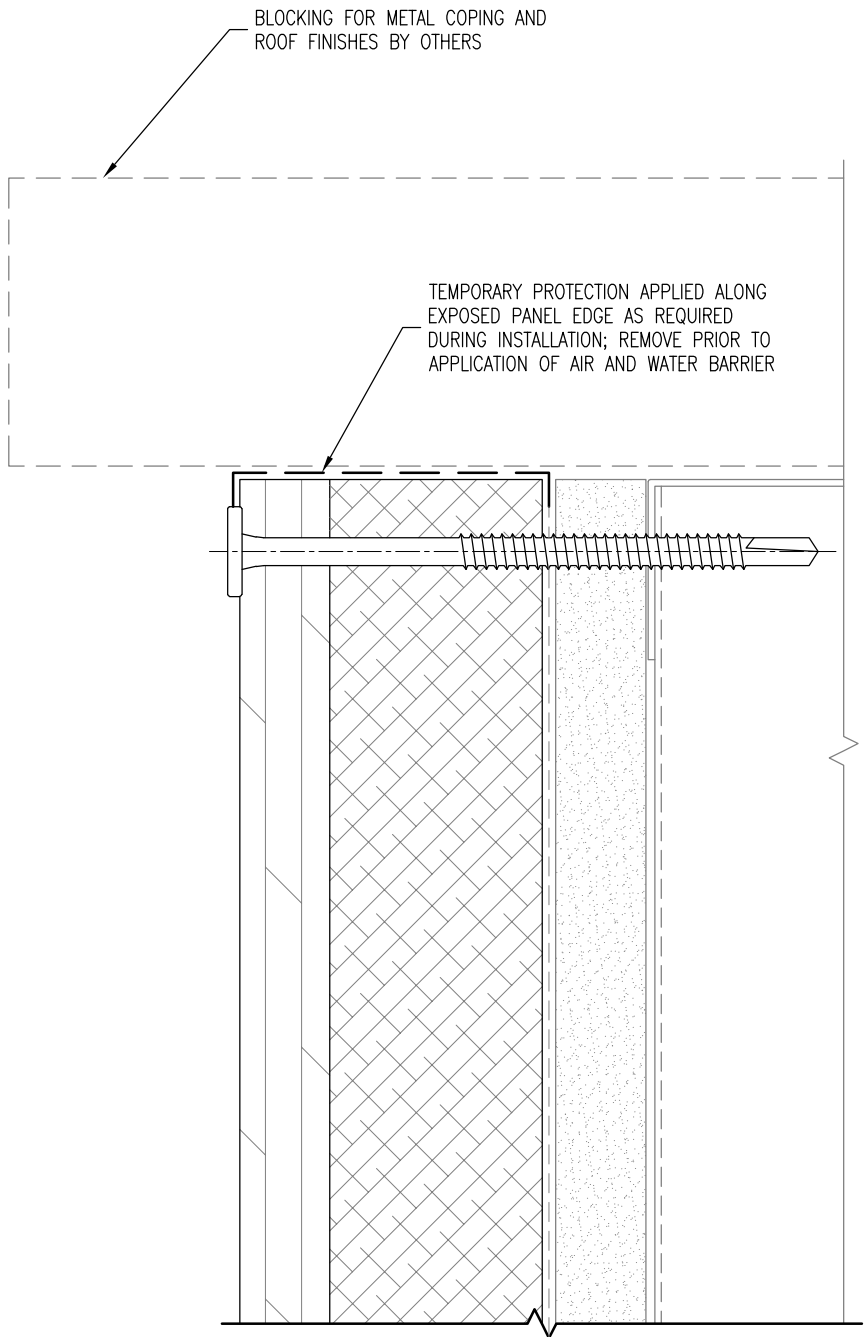


www.LaminatorsInc.com

800.523.2347

**JOINT DETAIL**  
**OMEGA CI RIGID INSULATION PANELS**  
**OVER STEEL STUD FRAMING WITH GYPSUM SHEATHING**

Date: 3/30/2020	Drawn By: JJM	Detail Set: OCI-SF-GYP	Dwg. No.: D-3	Rev: 02
--------------------	------------------	---------------------------	------------------	------------



BLOCKING FOR METAL COPING AND  
ROOF FINISHES BY OTHERS

TEMPORARY PROTECTION APPLIED ALONG  
EXPOSED PANEL EDGE AS REQUIRED  
DURING INSTALLATION; REMOVE PRIOR TO  
APPLICATION OF AIR AND WATER BARRIER

SECTION

DETAIL NOTES:

1. SPACING SHOWN BETWEEN SOME INSTALLATION SYSTEM COMPONENTS EXAGGERATED FOR CLARITY
2. AIR AND WATER BARRIER APPLIED TO SURFACE OF OMEGA CI TO BE VAPOR PERMEABLE
3. REFER TO D-2 FOR LAYOUT AND FASTENING REQUIREMENTS
4. REFER TO D-3 FOR TYPICAL COMPONENTS NOT ANNOTATED



www.LaminatorsInc.com

800.523.2347

TOP OF WALL DETAIL

OMEGA CI RIGID INSULATION PANELS  
OVER STEEL STUD FRAMING WITH GYPSUM SHEATHING

Date:  
3/30/2020

Drawn By:  
JJM

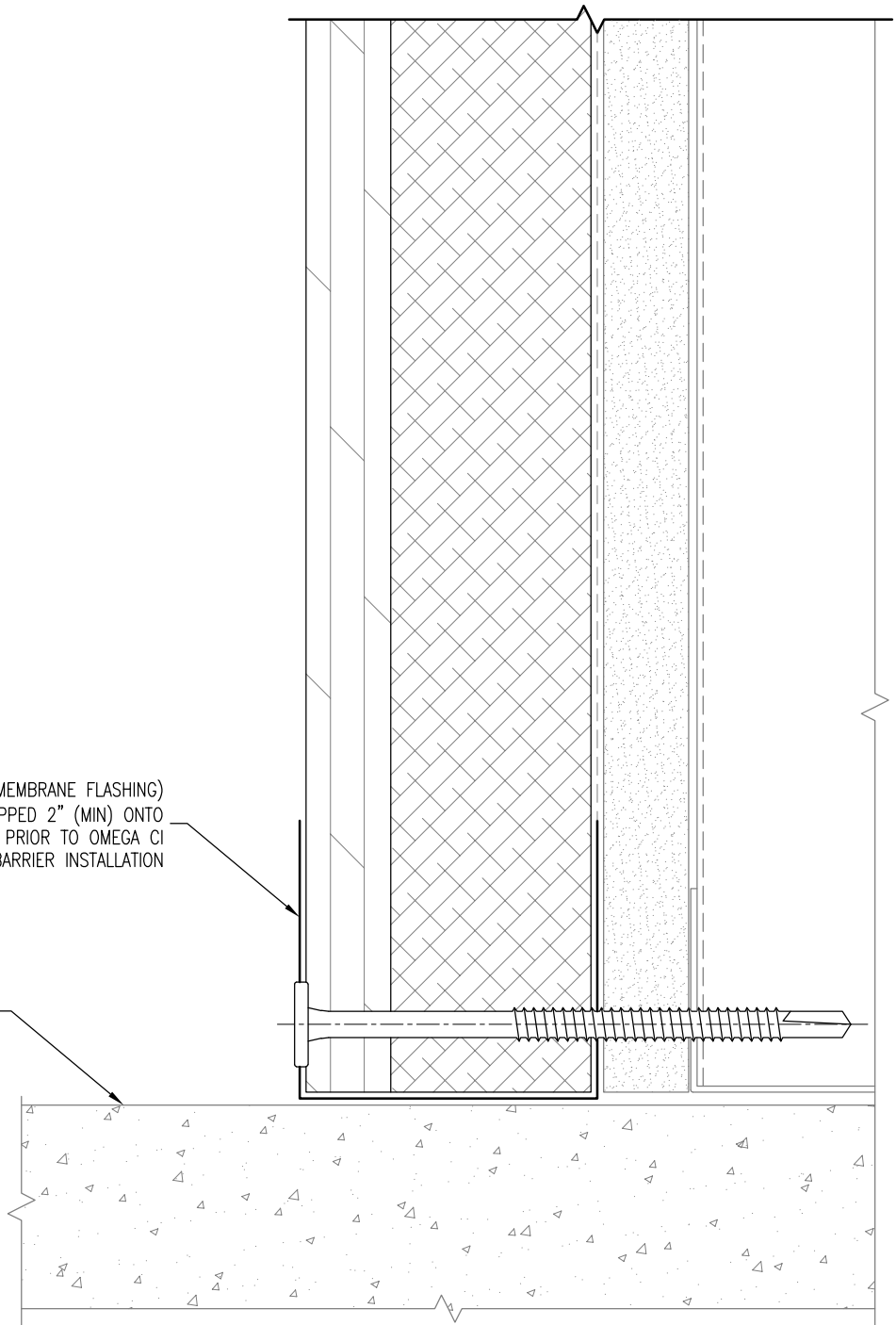
Detail Set:  
OCI-SF-GYP

Dwg. No.:  
D-4

Rev:  
02

MEMBRANE FLASHING (PART NO. OCI-MEMBRANE FLASHING)  
 APPLIED ALONG PANEL EDGE AND WRAPPED 2" (MIN) ONTO  
 EACH VERTICAL FACE; APPLY FLASHING PRIOR TO OMEGA CI  
 PANEL AND AIR AND WATER BARRIER INSTALLATION

GRADE



**SECTION**

**DETAIL NOTES:**

1. SPACING SHOWN BETWEEN SOME INSTALLATION SYSTEM COMPONENTS EXAGGERATED FOR CLARITY
2. AIR AND WATER BARRIER APPLIED TO SURFACE OF OMEGA CI TO BE VAPOR PERMEABLE
3. REFER TO D-2 FOR LAYOUT AND FASTENING REQUIREMENTS
4. REFER TO D-3 FOR TYPICAL COMPONENTS NOT ANNOTATED



www.LaminatorsInc.com

800.523.2347

**BASE OF WALL DETAIL**

**OMEGA CI RIGID INSULATION PANELS  
 OVER STEEL STUD FRAMING WITH GYPSUM SHEATHING**

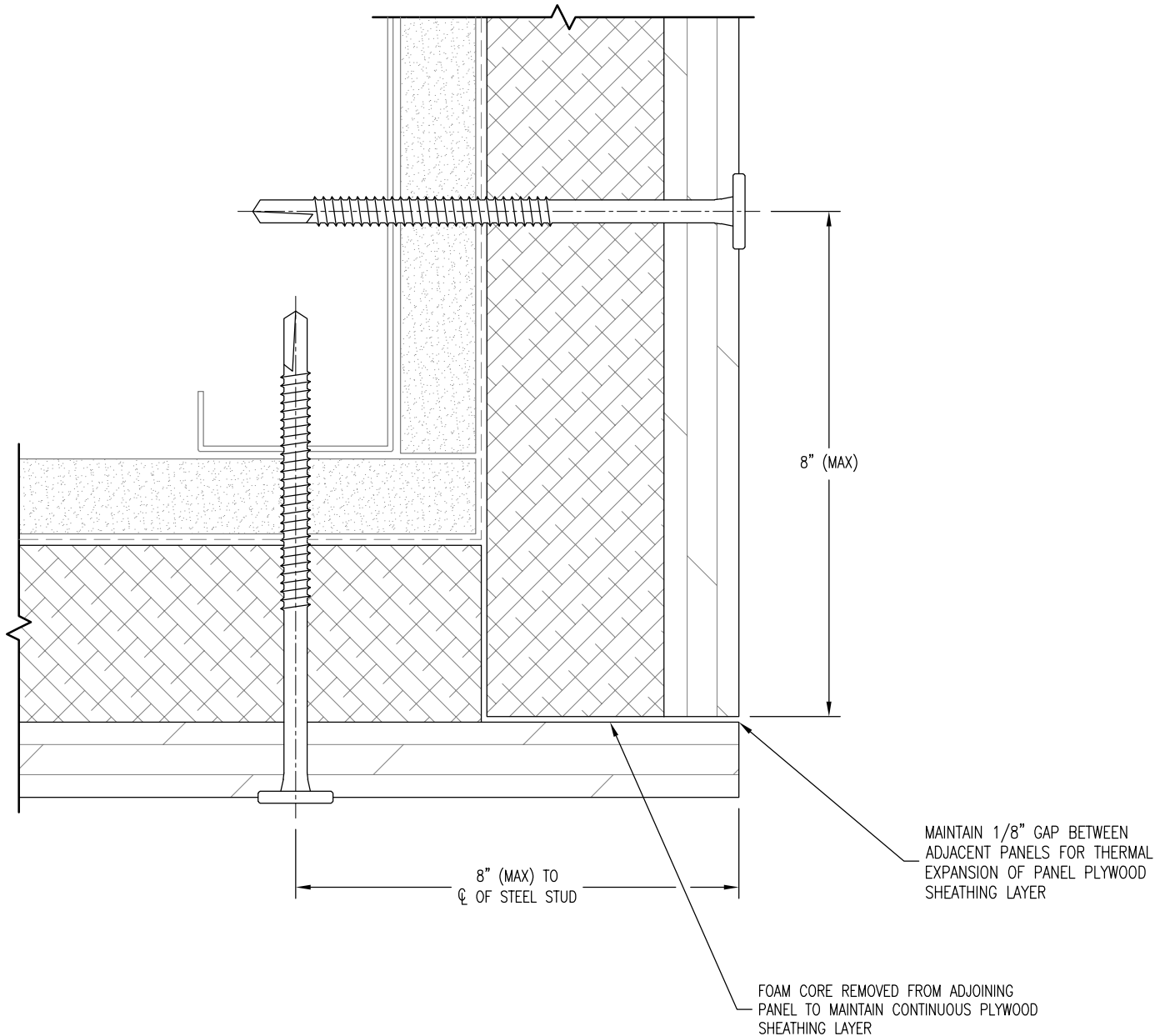
Date:  
3/30/2020

Drawn By:  
JJM

Detail Set:  
OCI-SF-GYP

Dwg. No.:  
D-5

Rev:  
02



**PLAN SECTION**

**DETAIL NOTES:**

1. SPACING SHOWN BETWEEN SOME INSTALLATION SYSTEM COMPONENTS EXAGGERATED FOR CLARITY
2. AIR AND WATER BARRIER APPLIED TO SURFACE OF OMEGA CI TO BE VAPOR PERMEABLE
3. REFER TO D-2 FOR LAYOUT AND FASTENING REQUIREMENTS
4. REFER TO D-3 FOR TYPICAL COMPONENTS NOT ANNOTATED



www.LaminatorsInc.com

800.523.2347

**OUTSIDE CORNER DETAIL**

**OMEGA CI RIGID INSULATION PANELS  
OVER STEEL STUD FRAMING WITH GYPSUM SHEATHING**

Date:  
3/30/2020

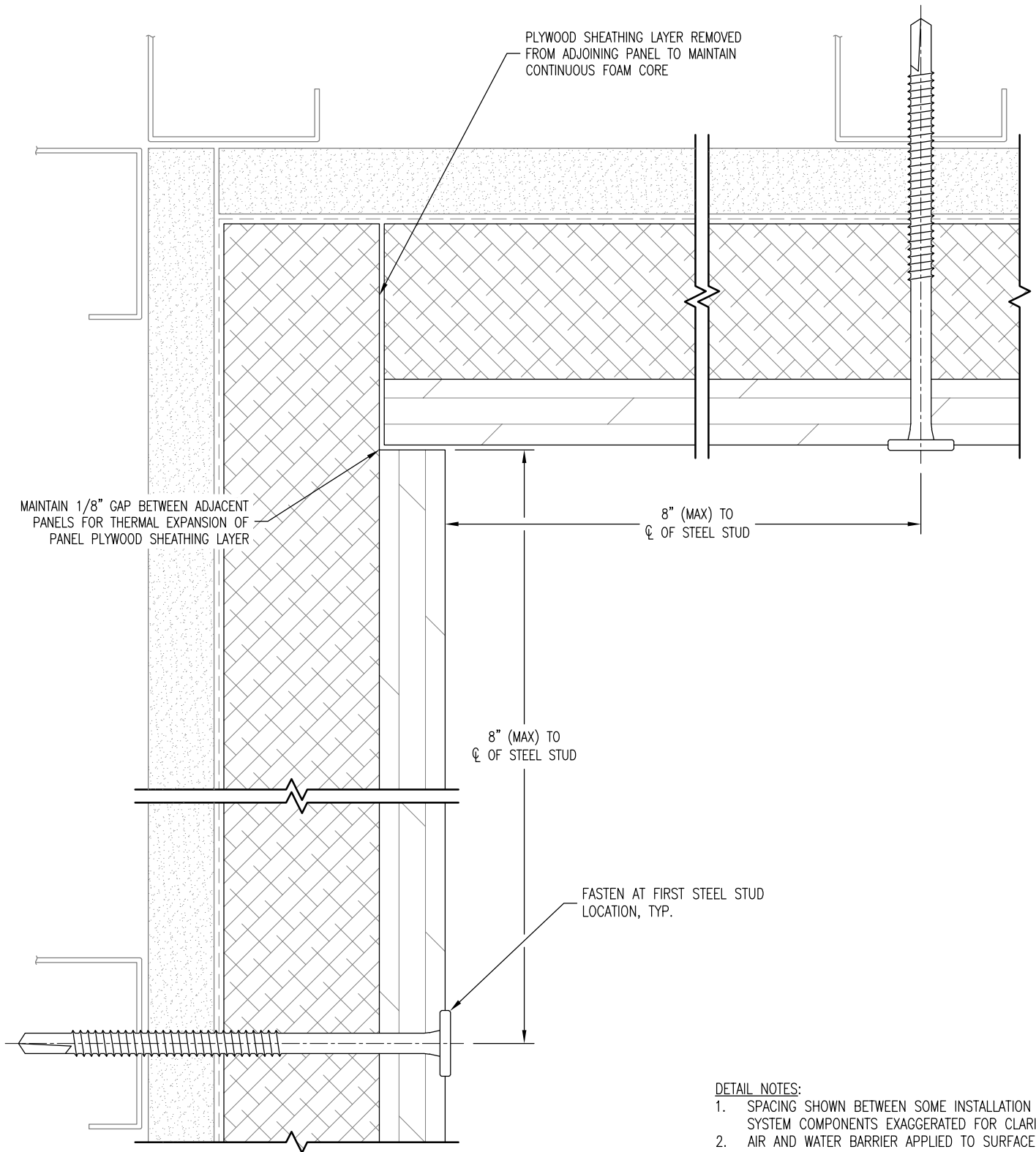
Drawn By:  
JJM

Detail Set:  
OCI-SF-GYP

Dwg. No.:  
D-6

Rev:  
02





PLYWOOD SHEATHING LAYER REMOVED FROM ADJOINING PANEL TO MAINTAIN CONTINUOUS FOAM CORE

MAINTAIN 1/8" GAP BETWEEN ADJACENT PANELS FOR THERMAL EXPANSION OF PANEL PLYWOOD SHEATHING LAYER

8" (MAX) TO  $\phi$  OF STEEL STUD

8" (MAX) TO  $\phi$  OF STEEL STUD

FASTEN AT FIRST STEEL STUD LOCATION, TYP.

**PLAN SECTION**

**DETAIL NOTES:**

1. SPACING SHOWN BETWEEN SOME INSTALLATION SYSTEM COMPONENTS EXAGGERATED FOR CLARITY
2. AIR AND WATER BARRIER APPLIED TO SURFACE OF OMEGA CI TO BE VAPOR PERMEABLE
3. REFER TO D-2 FOR LAYOUT AND FASTENING REQUIREMENTS
4. REFER TO D-3 FOR TYPICAL COMPONENTS NOT ANNOTATED

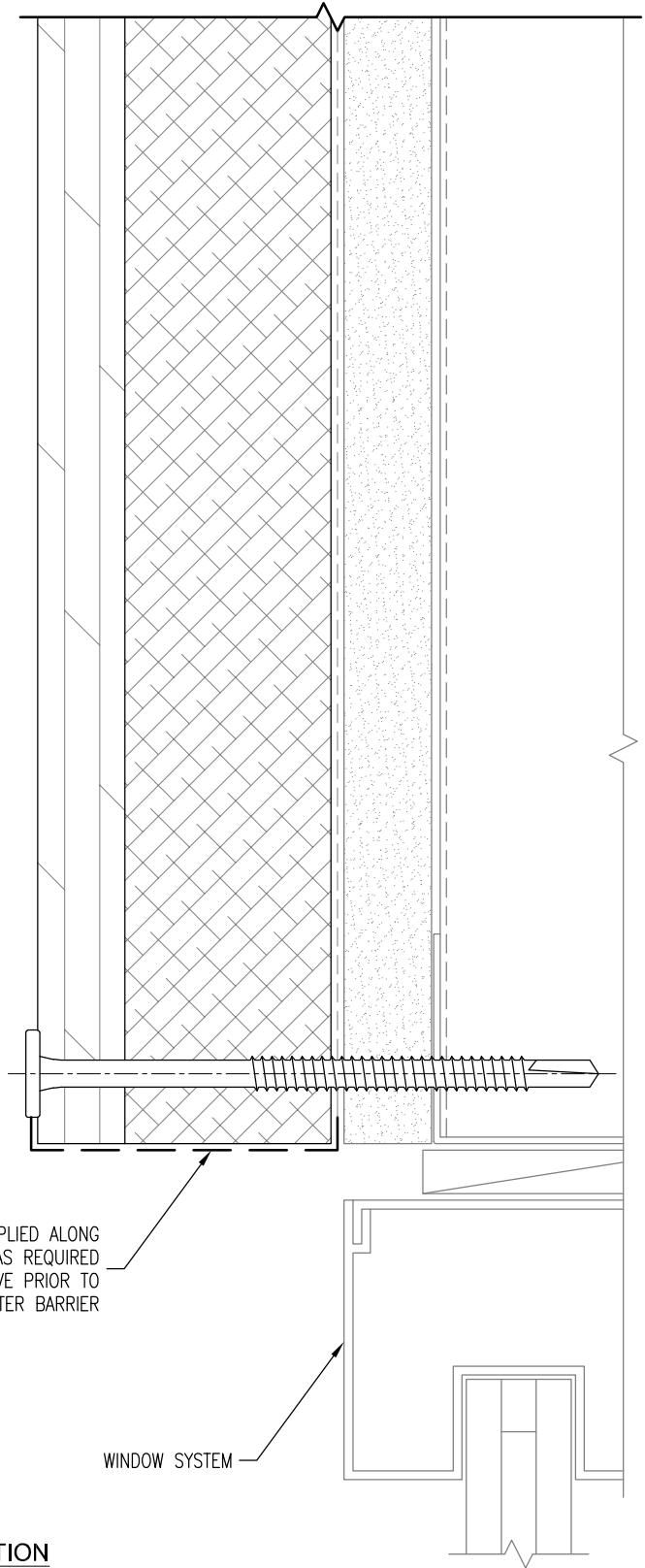


www.LaminatorsInc.com

800.523.2347

**INSIDE CORNER DETAIL**  
**OMEGA CI RIGID INSULATION PANELS**  
**OVER STEEL STUD FRAMING WITH GYPSUM SHEATHING**

Date: 3/30/2020	Drawn By: JJM	Detail Set: OCI-SF-GYP	Dwg. No.: D-7	Rev: 02
--------------------	------------------	---------------------------	------------------	------------



TEMPORARY PROTECTION APPLIED ALONG EXPOSED PANEL EDGE AS REQUIRED DURING INSTALLATION; REMOVE PRIOR TO APPLICATION OF AIR AND WATER BARRIER

WINDOW SYSTEM

**SECTION**

**DETAIL NOTES:**

1. SPACING SHOWN BETWEEN SOME INSTALLATION SYSTEM COMPONENTS EXAGGERATED FOR CLARITY
2. AIR AND WATER BARRIER APPLIED TO SURFACE OF OMEGA CI TO BE VAPOR PERMEABLE
3. REFER TO D-2 FOR LAYOUT AND FASTENING REQUIREMENTS
4. REFER TO D-3 FOR TYPICAL COMPONENTS NOT ANNOTATED



www.LaminatorsInc.com

800.523.2347

**WINDOW HEAD DETAIL**

**OMEGA CI RIGID INSULATION PANELS  
OVER STEEL STUD FRAMING WITH GYPSUM SHEATHING**

Date:  
3/30/2020

Drawn By:  
JJM

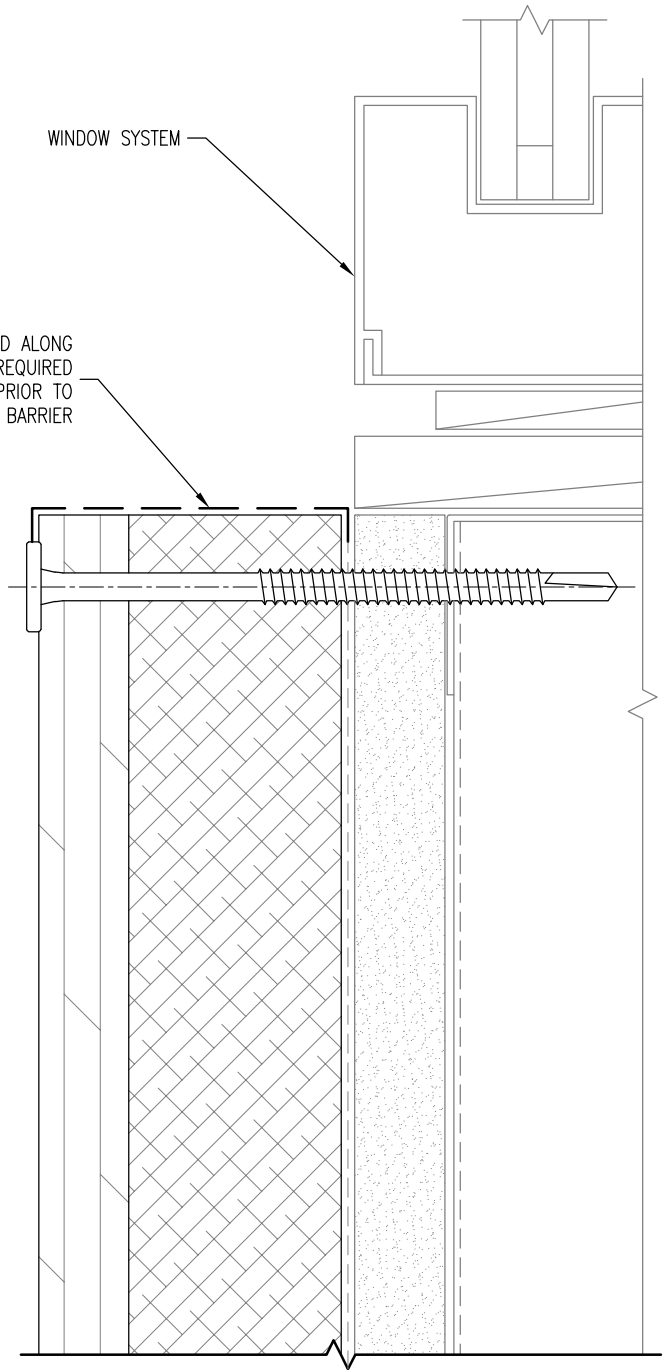
Detail Set:  
OCI-SF-GYP

Dwg. No.:  
D-8

Rev:  
02

WINDOW SYSTEM

TEMPORARY PROTECTION APPLIED ALONG EXPOSED PANEL EDGE AS REQUIRED DURING INSTALLATION; REMOVE PRIOR TO APPLICATION OF AIR AND WATER BARRIER



SECTION

DETAIL NOTES:

1. SPACING SHOWN BETWEEN SOME INSTALLATION SYSTEM COMPONENTS EXAGGERATED FOR CLARITY
2. AIR AND WATER BARRIER APPLIED TO SURFACE OF OMEGA CI TO BE VAPOR PERMEABLE
3. REFER TO D-2 FOR LAYOUT AND FASTENING REQUIREMENTS
4. REFER TO D-3 FOR TYPICAL COMPONENTS NOT ANNOTATED



www.LaminatorsInc.com

800.523.2347

WINDOW SILL DETAIL

OMEGA CI RIGID INSULATION PANELS  
OVER STEEL STUD FRAMING WITH GYPSUM SHEATHING

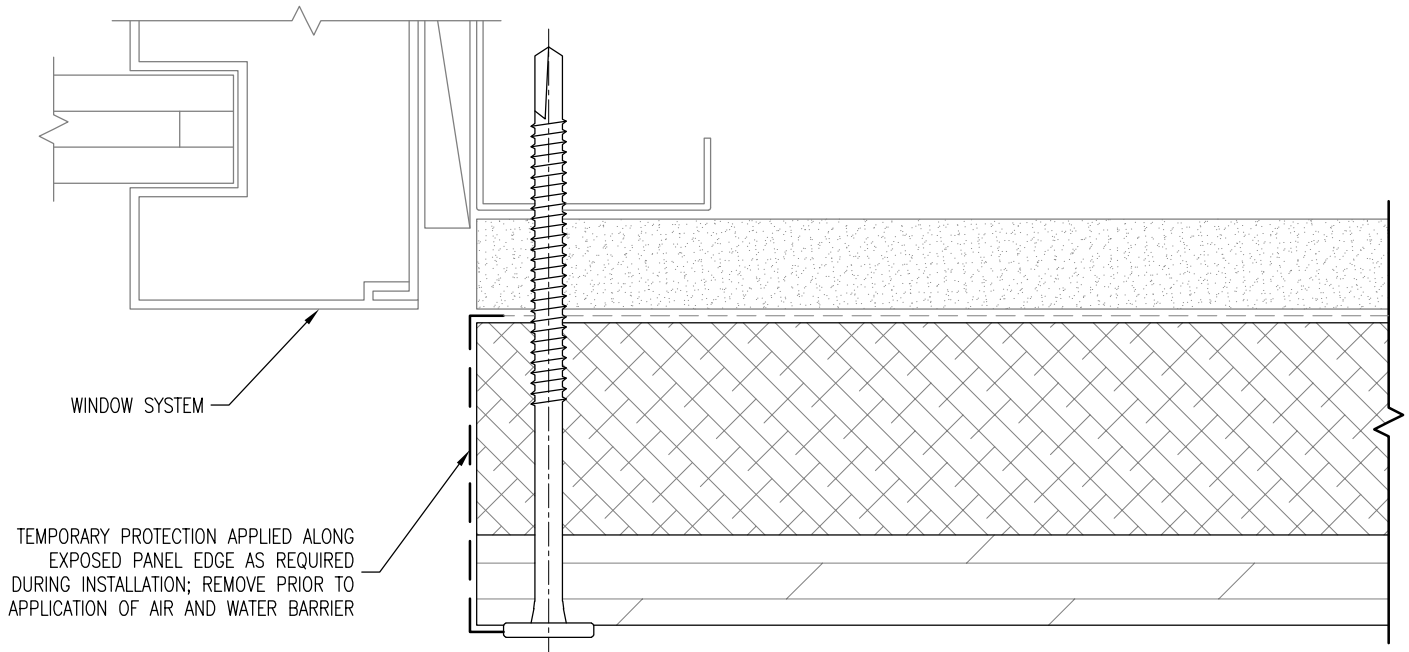
Date:  
3/30/2020

Drawn By:  
JJM

Detail Set:  
OCI-SF-GYP

Dwg. No.:  
D-9

Rev:  
02



WINDOW SYSTEM

TEMPORARY PROTECTION APPLIED ALONG EXPOSED PANEL EDGE AS REQUIRED DURING INSTALLATION; REMOVE PRIOR TO APPLICATION OF AIR AND WATER BARRIER

PLAN SECTION

DETAIL NOTES:

1. SPACING SHOWN BETWEEN SOME INSTALLATION SYSTEM COMPONENTS EXAGGERATED FOR CLARITY
2. AIR AND WATER BARRIER APPLIED TO SURFACE OF OMEGA CI TO BE VAPOR PERMEABLE
3. REFER TO D-2 FOR LAYOUT AND FASTENING REQUIREMENTS
4. REFER TO D-3 FOR TYPICAL COMPONENTS NOT ANNOTATED



www.LaminatorsInc.com

800.523.2347

WINDOW JAMB DETAIL

OMEGA CI RIGID INSULATION PANELS  
OVER STEEL STUD FRAMING WITH GYPSUM SHEATHING

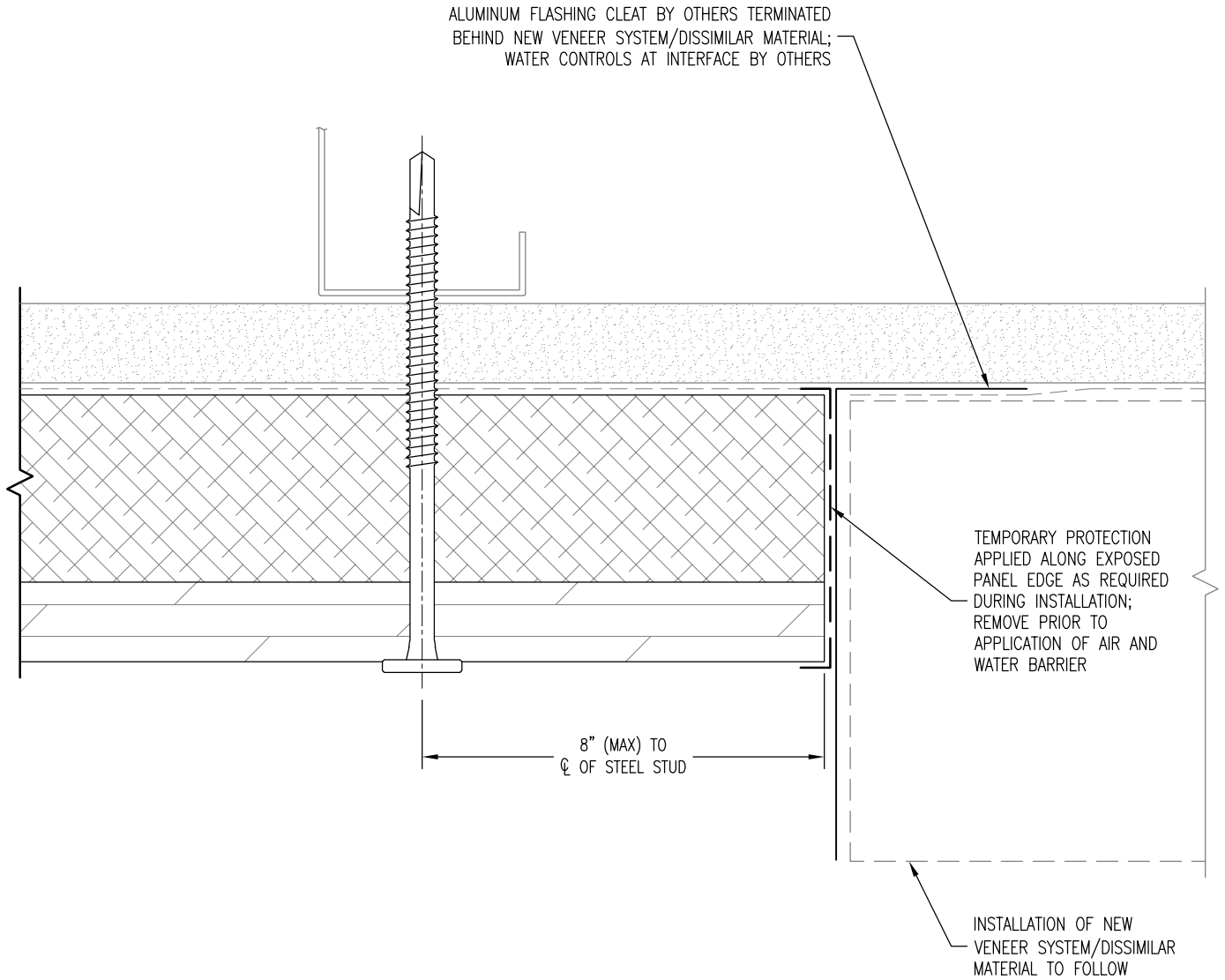
Date:  
3/30/2020

Drawn By:  
JJM

Detail Set:  
OCI-SF-GYP

Dwg. No.:  
D-10

Rev:  
02



**PLAN SECTION**

**DETAIL NOTES:**

1. SPACING SHOWN BETWEEN SOME INSTALLATION SYSTEM COMPONENTS EXAGGERATED FOR CLARITY
2. AIR AND WATER BARRIER APPLIED TO SURFACE OF OMEGA CI TO BE VAPOR PERMEABLE
3. REFER TO D-2 FOR LAYOUT AND FASTENING REQUIREMENTS
4. REFER TO D-3 FOR TYPICAL COMPONENTS NOT ANNOTATED



www.LaminatorsInc.com

800.523.2347

VERTICAL EDGE DETAIL (ADJACENT TO NEW)

OMEGA CI RIGID INSULATION PANELS  
OVER STEEL STUD FRAMING WITH GYPSUM SHEATHING

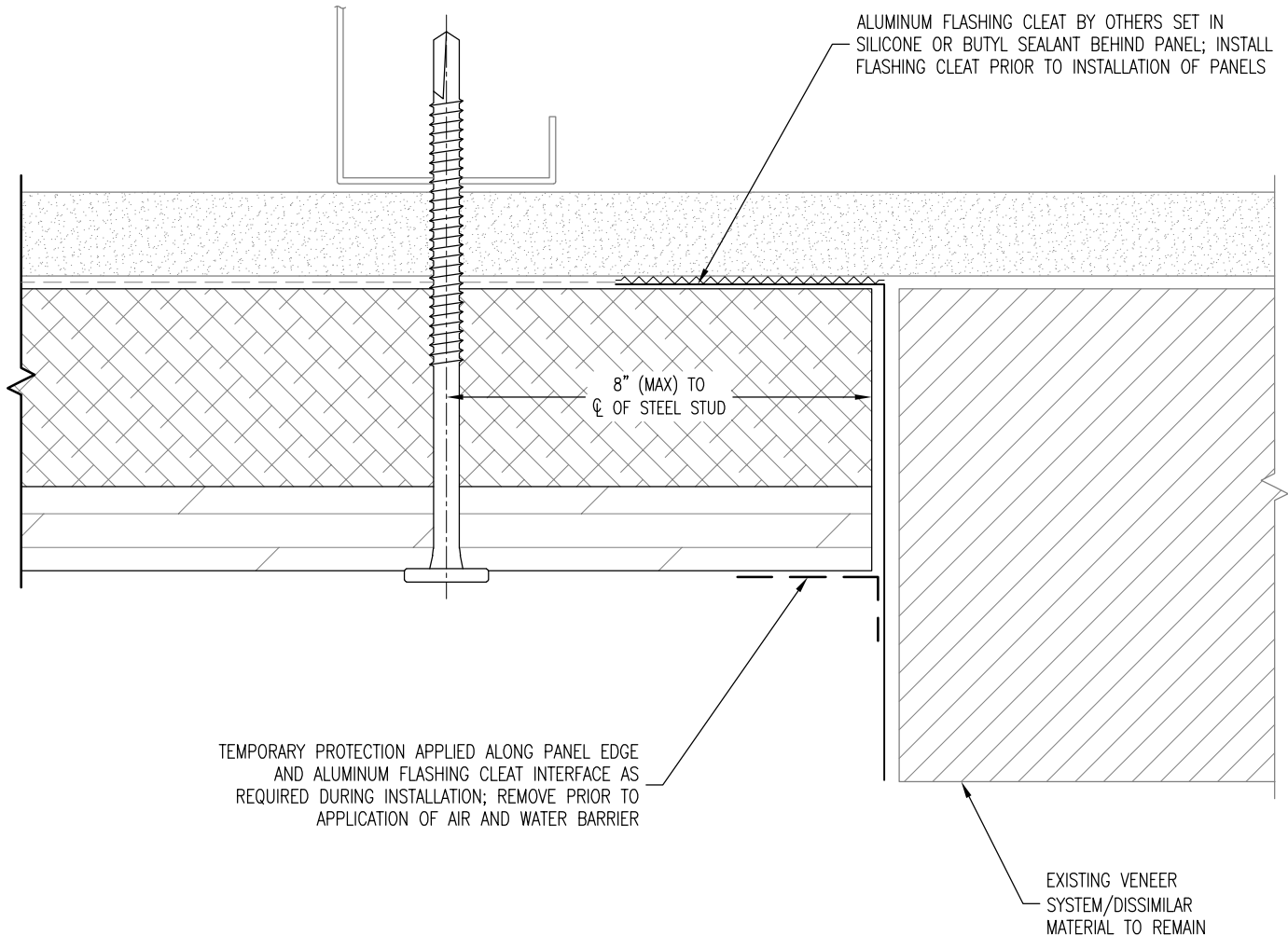
Date:  
3/30/2020

Drawn By:  
JJM

Detail Set:  
OCI-SF-GYP

Dwg. No.:  
D-11.1

Rev:  
02



**PLAN SECTION**

**DETAIL NOTES:**

1. SPACING SHOWN BETWEEN SOME INSTALLATION SYSTEM COMPONENTS EXAGGERATED FOR CLARITY
2. AIR AND WATER BARRIER APPLIED TO SURFACE OF OMEGA CI TO BE VAPOR PERMEABLE
3. REFER TO D-2 FOR LAYOUT AND FASTENING REQUIREMENTS
4. REFER TO D-3 FOR TYPICAL COMPONENTS NOT ANNOTATED



www.LaminatorsInc.com

800.523.2347

VERTICAL EDGE DETAIL (ADJACENT TO EXISTING)

OMEGA CI RIGID INSULATION PANELS  
OVER STEEL STUD FRAMING WITH GYPSUM SHEATHING

Date:  
3/30/2020

Drawn By:  
JJM

Detail Set:  
OCI-SF-GYP

Dwg. No.:  
D-11.2

Rev:  
02