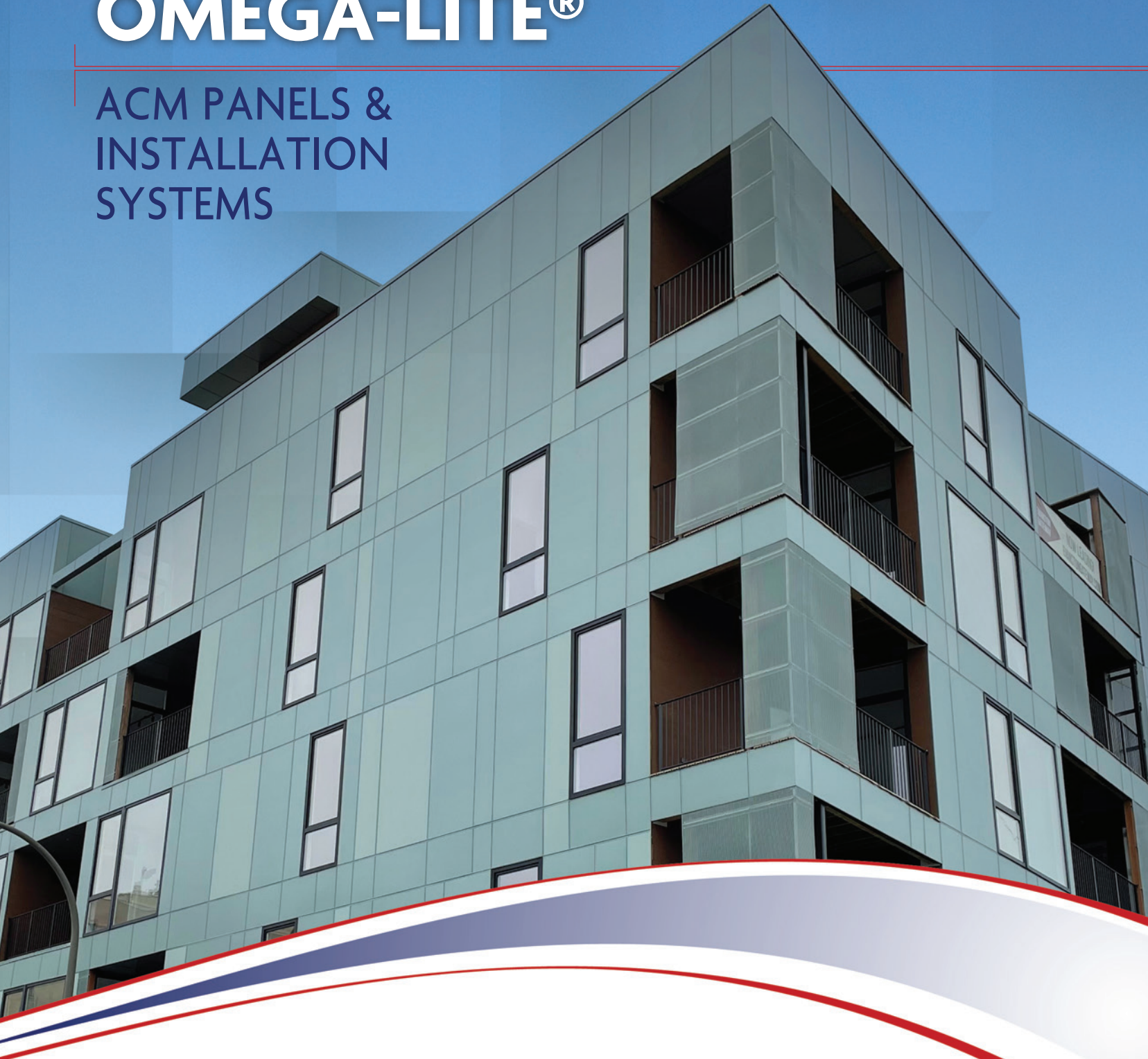


OMEGA-LITE®

ACM PANELS &
INSTALLATION
SYSTEMS



LAMINATORS
Composite Panel Solutions

Effective May 2024

Tech Support: 800.523.2347 LaminatorsInc.com

GO BEYOND THE PANEL... AND GO TO THE NEXT LEVEL.

Laminators Incorporated does more than offer ACM panels.

We manufacture aluminum composite panels and installation systems designed to maintain a consistent and long-lasting professional look. With a variety of standard colors and finishes, coupled with the ability to meet any custom color requirement, design options are limited only by your imagination.



For over 60 years, we have taken pride in delivering innovative, high-quality installation systems and superior customer service. Discover for yourself why building owners, architects, general contractors, distributors, fabricators, and installers turn to Laminators for all their architectural panel needs.

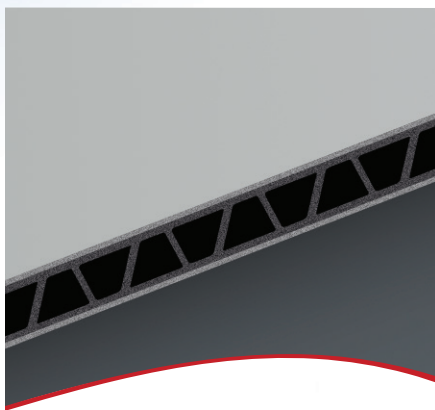
*At Laminators, we believe in fully integrated, fully tested solutions. We're ready to help you go beyond the panel... and go to the next level. Call **800.523.2347** to learn more or visit **LaminatorsInc.com**.*



OMEGA-LITE®

When you're looking for a highly decorative yet durable solution for exterior wall surfaces, choose Omega-Lite ACM panels—they will not rot, swell, corrode, or delaminate. Best of all, with our installation systems they make total installed costs extremely competitive.

- Composed of a lightweight polypropylene corrugated core between two finished aluminum sheets
- Non-absorbent, water-resistant, and easy to maintain
- Custom color panels and caulks available to meet any corporate need
- Available in smooth or stucco-embossed finishes
- Class A fire rating and NFPA 285 compliant
- Curved structures are possible with the combination of Omega-Lite and Omega-Flex™ panels which provide the ability to wrap a radius



Panels feature a corrugated polypropylene core for the highest strength-to-weight ratio of any competitive ACM panel. Painted aluminum sheets cover a black, plastic, water-resistant core.



Typical Applications

- Fascias
- Soffits
- Decorative Storefronts
- Corporate ID Projects
- Canopies
- Clean Rooms
- Sunrooms
- Equipment Enclosures

Top-side horizontal applications are not recommended.

NOW AVAILABLE!
Omega-Lite FR for the NEW AdaptaClad RS installation system
(see page 7)

Unlike other ACM manufacturers, Laminators offers various engineered and tested systems using our Omega-Lite ACM panels. Our proprietary systems can easily be combined with other systems, masonry and glass for instance, to provide a variety of design options.

TECHNICAL DATA

Construction of Standard Omega-Lite

Sizes*	Core	Backer	Face Thickness	Surface Face Finish	Colors
4 ft. x 8 ft. 4 ft. x 10 ft. 4 ft. x 12 ft.	Corrugated Polypropylene	Mill finish 0.013 in. aluminum backer, or same as face for 2-sided construction	0.022 to 0.032 in.	Smooth and/or stucco-embossed aluminum	PVDF/Kynar 500®, Designer Series ⁺ , and custom colors
0.022 to 0.024 in.			Smooth and/or stucco-embossed aluminum	Polyester and Natural Series ⁺	

*5 ft. widths also available in select colors. ⁺Smooth only. Refer to Architectural Color Chart for specific size and finish availability.

References & Testing

AAMA 501.1	Standard Test Method for Water Penetration of Windows, Curtain Walls, and Doors Using Dynamic Pressure	ASTM D1929	Standard Test Method for Determining Ignition Temperature of Plastics
AAMA 508	Voluntary Test Method and Specification for Pressure Equalized Rain Screen Wall Cladding Systems	ASTM D2126	Standard Test Method for Response of Rigid Cellular Plastics to Thermal and Humid Aging
AAMA 509	Voluntary Test and Classification Method for Drained and Back Ventilated Rain Screen Wall Cladding Systems	ASTM D3273	Standard Test Method for Resistance to Growth of Mold on the Surface of Interior Coatings in an Environmental Chamber
AAMA 2605	Voluntary Specification, Performance Requirements and Test Procedures for Superior Performing Organic Coatings on Aluminum Extrusions and Panels	ASTM E8	Standard Test Methods for Tension Testing of Metallic Materials
ASTM B209	Standard Specification for Aluminum and Aluminum-Alloy Sheet and Plate	ASTM E84	Standard Test Method for Surface Burning Characteristics of Building Materials
ASTM B221	Standard Specification for Aluminum and Aluminum-Alloy Extruded Bars, Rods, Wire, Profiles, and Tubes	ASTM E90	Standard Test Method for Laboratory Measurement of Airborne Sound Transmission Loss of Building Partitions and Elements
ASTM C209	Standard Test Methods for Cellulosic Fiber Insulating Board	ASTM E96	Standard Test Methods for Water Vapor Transmission of Materials
ASTM C518	Standard Test Method for Steady-State Thermal Transmission Properties by Means of the Heat Flow Meter Apparatus	ASTM E283	Standard Test Method for Determining Rate of Air Leakage Through Exterior Windows, Curtain Walls, and Doors Under Specified Pressure Differences Across the Specimen
ASTM C920	Standard Specification for Elastomeric Joint Sealants	ASTM E330	Standard Test Method for Structural Performance of Exterior Windows, Doors, Skylights, and Curtain Walls by Uniform Static Air Pressure Difference
ASTM C1193	Standard Guide for Use of Joint Sealants	ASTM E331	Standard Test Method for Water Penetration of Exterior Windows, Skylights, Doors, and Curtain Walls by Uniform Static Air Pressure Difference
ASTM C1289	Standard Specification for Faced Rigid Cellular Polyisocyanurate Thermal Insulation Board	ASTM E1233	Structural Performance of Exterior Windows, Curtain Walls, and Doors by Cyclic Air Pressure Differential
ASTM D635	Standard Test Method for Rate of Burning and/or Extent and Time of Burning of Plastics in a Horizontal Position	NFPA 285	Standard Fire Test Method for Evaluation of Fire Propagation Characteristics of Exterior Non-Load-Bearing Wall Assemblies Containing Combustible Components
ASTM D1621	Standard Test Method for Compressive Properties of Rigid Cellular Plastics		
ASTM D1654	Standard Test Method for Evaluation of Painted or Coated Specimens Subjected to Corrosive Environments		
ASTM D1781	Standard Test Method for Climbing Drum Peel for Adhesives		

TECHNICAL DATA

Specifications (Based on 6mm panel with 0.032 in. face and 0.013 in. backer.)

Thickness	Weight	Fabrication Tolerances	R-Value	Thermal Expansion
6mm (Special-order thicknesses available upon request)	0.99 lb./ft. ² (+/-)	Length and Width: +/- 1/16 in. Squareness: +/- 1/16 in. Thickness: +/- 1/64 in.	R-0.50 hr. ft. ² °F/BTU	Temp: 13.1 x 10 ⁻⁶ in./in./°F

Fire Rating: Based on ASTM E84: Class A, Flame Spread Index = 15, Smoke Developed Index = 90

Bond Test: Based on ASTM D1781

Approvals/Compliance

- Miami-Dade County Product Control Approved
- Miami-Dade County, Florida, NOA #23-0911.07, Expiration 08/2025 and Florida Product Approval (FL17652-R3)
 - +/- 120 psf design wind load
 - Approval pertains only to Omega-Lite panels installed in the following systems:
 - 1-Piece, Tight-Fit Molding Installation System
 - Clip & Caulk Installation System
 - Rout & Return Installation System

NFPA 285 (National Fire Protection Association) Compliant

Evaluation Services Listings (ESL)

- ESL-1248 (NFPA 285 Standard): 1-Piece, Tight-Fit Molding with BDV and Clip & Caulk with BDV over both Omega CI and gypsum
- ESL-1249 (AAMA 509 Standard): 1-Piece, Tight-Fit Molding with BDV over Omega CI and Clip & Caulk with BDV over both Omega CI and gypsum
- ESL-1250 (ASTM E330 Standard): 1-Piece, Tight-Fit Molding with BDV over Omega CI and Clip & Caulk with BDV over both Omega CI and gypsum
- ESL-1251 (ASTM D1781 Standard): Omega-Lite ACM Panels
- ESL-1252 (ASTM E331 Standard): 1-Piece, Tight-Fit Molding with BDV and Clip & Caulk with BDV over Omega CI
- ESL-1253 (ASTM E84 Standard): Omega-Lite ACM Panels
- ESL-1254 (ASTM E283 Standard): 1-Piece, Tight-Fit Molding with BDV and Clip & Caulk with BDV over Omega CI



INSTALLATION SYSTEMS

Laminators Incorporated is one of the few manufacturers who offer various fully designed, integrated, and tested ACM panels and installation systems... and we're here to help you throughout the entire process!

We offer different panel installation systems to give you the look and performance you need at the budgeted cost you require. Panels can be measured and cut at the job site or in a shop environment. Cut-to-size panels can be ordered to minimize waste and reduce labor and material expenses.

To provide you with the most flexibility, Laminators has both Field-Fabricated and Shop-Fabricated installation systems —

Field-Fabricated Installation Systems:

Designed for fast, easy fabrication directly on the job site, saving time and money by allowing installers to adapt to as-built conditions during installation.

- 1-Piece, Tight-Fit Molding
- 1-Piece, Tight-Fit Molding Legacy
- Clip & Caulk™
- Clip & Caulk Legacy

Shop-Fabricated Installation Systems:

Designed to be prefabricated in our shop and delivered directly to the job site, or an experienced fabricator can fabricate the panels in a shop environment.

- AdaptaClad™ RS – **NEW!**
- Rout & Return

Our proprietary systems can be easily combined with other systems, masonry and glass for instance, to provide a variety of design options. Omega-Lite installed in both our Field-Fabricated and Shop-Fabricated installation systems meets NFPA 285 and Miami-Dade County Control requirements. We offer unparalleled flexibility with multiple installation systems to fit your project and regional conditions.



INSTALLATION SYSTEMS

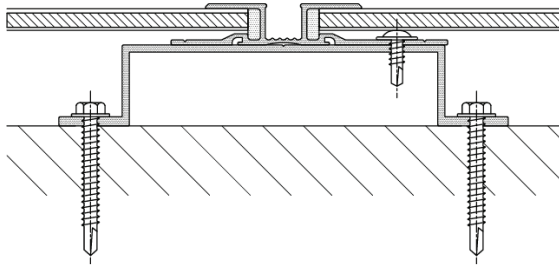
FIELD-FABRICATED SYSTEMS

Our drained and back-ventilated field-fabricated installation systems (1-Piece, Tight-Fit Molding, Clip & Caulk) provide designers and installers the optimal solution for the challenges associated with achieving a code-compliant exterior wall envelope. Simple and flexible, these new systems allow fast, easy fabrication directly on the jobsite, saving time and money by allowing installers to adapt to as-built conditions during installation.

1-Piece, Tight-Fit Molding

Laminators' 1-Piece, Tight-Fit Molding installation system achieves a traditional yet high-tech appearance at an affordable cost. This easy-to-install progressive installation system uses aluminum moldings to encapsulate panel edges.

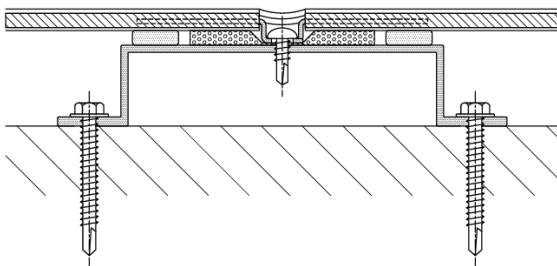
- Both flat and reveal moldings are available providing two different design options for panel joints
- No exposed sealant joints to maintain
- Option to provide mitered joint intersections



Clip & Caulk™

Laminators' Clip & Caulk installation system provides the traditional Rout & Return "look" without the hassle and cost of fabricating panels.

- Cost-effective yet attractive finish
- Color-matched or contrasting joint sealants available



Since the onset of the drained and back-ventilated systems, we renamed the previous 1-Piece, Tight-Fit Molding and Clip & Caulk systems as "Legacy Versions" of our systems. These Legacy Field-Fabricated Installation Systems are ideal for various architectural features, as well as when building codes do not require the high performance as designed in our new and improved drained and back-ventilated systems. Refer to LaminatorsInc.com for more information.

INSTALLATION SYSTEMS

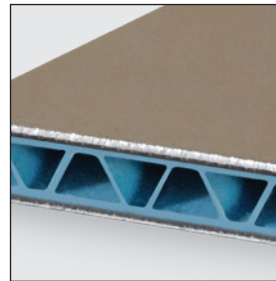
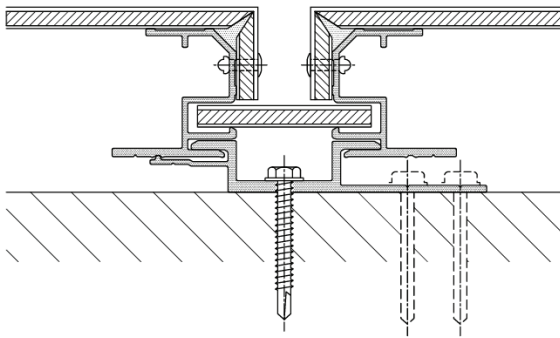
SHOP-FABRICATED SYSTEMS

With our shop-fabricated installation systems (AdaptaClad RS, Rout & Return), panels can be prefabricated in our shop and delivered directly to the jobsite, or an experienced fabricator can fabricate the panels in a shop environment.

NEW! AdaptaClad™ RS

Laminators' AdaptaClad RS is a weather-resistant exterior wall cladding panel system that combines a modern reveal-joint aesthetic with drained and back-ventilated rainscreen performance.

- Built-in adaptability to install over almost any building substrate
- Simple-hang installation requiring mechanical attachment on only two sides of the panel module
- Rainscreen system with an open dry joint design characterized by a deep reveal terminated with an insert strip installed without the use of caulks or adhesives



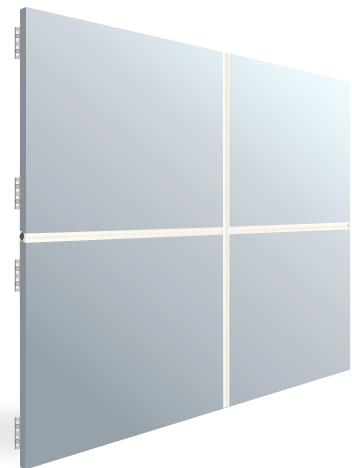
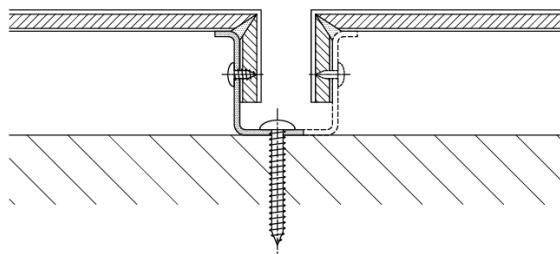
AdaptaClad™ RS utilizes our NEW Omega-Lite® FR ACM panels, aluminum panel extrusions and clips, and accessories.

Omega-Lite FR consists of a corrugated thermoplastic core with fire-resistant additive bonded to a finished aluminum sheet on one face and a protective mill finished sheet of aluminum on the other.

Rout & Return

Laminators' Rout & Return installation system gives a sophisticated yet high-tech look.

- "Deep-Reveal" or flush monolithic appearance
- Color-matched caulk gives a beautiful monochromatic look; contrasting caulk can be used with eye-pleasing results



Visit LaminatorsInc.com to download our complete set of installation guides, CAD drawings, specifications, and technical data sheets, as well as to learn more about our systems.

CONTINUOUS INSULATION

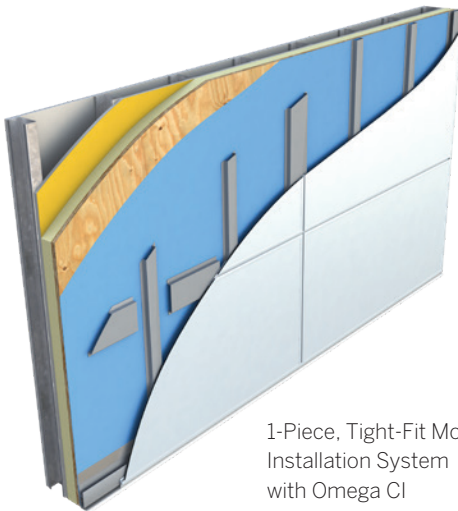
Omega CI is a rigid insulation panel comprising a closed-cell polyiso foam core bonded to a premium performance coated glass backer and a 5/8" fire-treated plywood face. Omega CI can be used in any of our installation systems and is available in 4' x 8' sheets in 2.1" thickness (contact Laminators technical support for alternative thickness availability).

Benefits

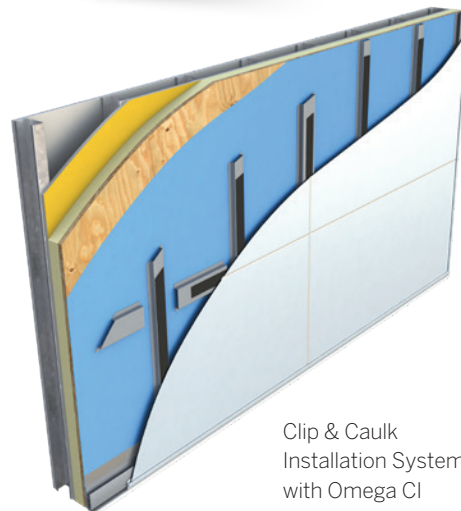
- Ease of installation: product is installed in a similar manner to traditional plywood sheathing
- Labor savings: combines the installation of continuous insulation and structural sheathing into one component
- Single-source responsibility for product delivery
- Simplifies attachment of ACM veneer systems by providing a continuous structural substrate
- 2.1" thickness provides R-9.6 for IECC/ASHRAE 90.1 prescriptive continuous insulation requirement
- NFPA 285 compliant for installations on Type I, II, III, and IV construction

Testing & Approvals

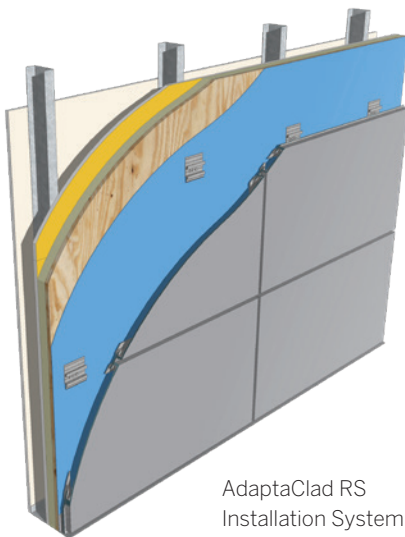
- Class A fire rating and NFPA 285 compliant with all installation systems



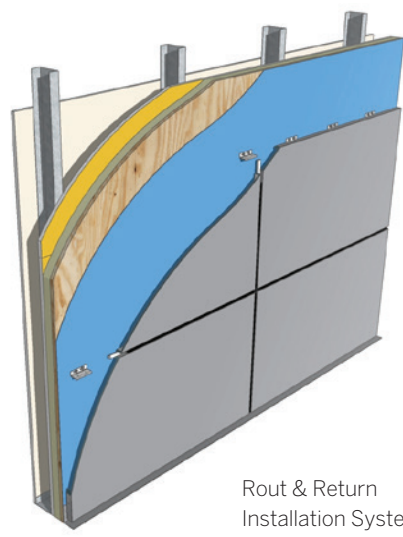
1-Piece, Tight-Fit Molding Installation System with Omega CI



Clip & Caulk Installation System with Omega CI



AdaptaClad RS Installation System with Omega CI



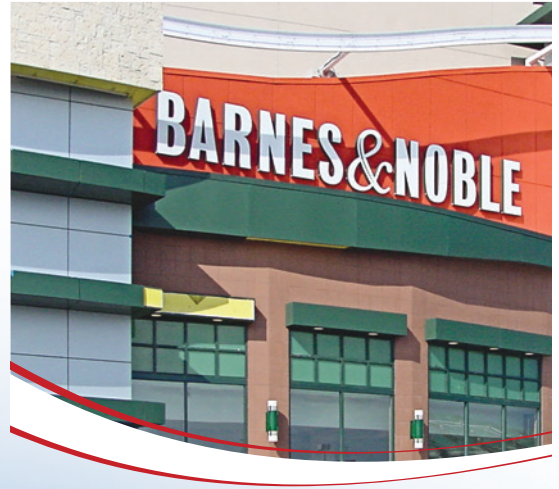
Rout & Return Installation System with Omega CI

COLORS & FINISHES

Vivid colors add new dimension to great architectural design. The right colors create visual interest, enhance beauty, and promote a sense of balance. Laminators Incorporated offers **more than 60 stunning color choices** to complement your design, covering a range of aesthetics and applications. We can also create or match custom colors to your specifications, making it easy to maintain consistency in corporate identity programs.

In addition to the wide range of color choices, panels are available in several finishes ranging from smooth wood grains to bright metallic hues. Metal color chips and samples are also available by request.

We specialize in small batches and short lead times, as well as offer unlimited custom colors and patterns. Whether you have a project that requires 200 or 20,000 square feet of custom color panels, we'll get it delivered to the job site in as little as 8 weeks... we are your best solution!



Visit LaminatorsInc.com to view or download our Architectural Color Chart for a full list of colors and finishes. To speak with an architectural systems representative, please call **800.523.2347**.

ARCHITECTURAL SERVICES

Unique in the industry, Laminators is a full-service manufacturing company offering complete, innovative, turnkey solutions for your architectural cladding needs.

As manufacturers and fabricators of architectural panels, we understand all the nuances of performing take-offs, fabricating for time- and cost-efficiency, and more.

Whether your project is in the design, specification, production, or installation stage, our experienced staff can assist your team along the way, including:

- Engineering
- Shop Drawings
- Fabrication
- Field Training
- Take-Offs
- Installer Training*

Whether you are a building owner, architect, general contractor, distributor, fabricator, or installer, you can count on Laminators to deliver the highest-quality installation systems and customer service in the industry.

**Located at Laminators' training facility*



Visit [LaminatorsInc.com](https://www.laminatorsinc.com) to see our full Architectural Project Portfolio.



LAMINATORS

Composite Panel Solutions

3255 Penn Street, Hatfield, PA 19440-1731

800.523.2347 | LaminatorsInc.com