



ICC-ES Listing Report

Reissued February 2025

ESL-1250

This listing is subject to renewal February 2026.

CSI: DIVISION: 07 00 00—THERMAL AND MOISTURE PROTECTION
Section: 07 42 43 – Composite Wall Panels

Product Certification System:

The ICC-ES product-certification system includes evaluating reports of tests of standard manufactured product, prepared by accredited testing laboratories and provided by the listee, to verify compliance with applicable codes and standards. The system also involves factory inspections, and assessment and surveillance of the listee's quality system.

Product: OMEGA-LITE® ACM PANELS

Listee: LAMINATORS INC.

Evaluation: Omega-Lite® ACM panels are prefabricated panels consisting of a 0.185-inch (4.7 mm) thick extruded polypropylene core bonded to an unfinished 0.013-inch (0.33 mm) thick aluminum backer sheet on one side and a finished 0.028-inch (0.71 mm) thick aluminum sheet on the other side to create an overall panel thickness of 0.24-inch (6 mm) nominal; the panels were evaluated when tested in accordance to the following standard:

- ASTM E330-14, Standard Test Method for Structural Performance of Exterior Windows, Doors, Skylights and Curtain Walls by Uniform Static Air Pressure Difference, ASTM International.

Findings: Omega-Lite® ACM panels when used in various installations systems have ultimate design pressures as specified in Table 1 below based on testing in accordance with ASTM E330. See Figures 1-3 for details.

TABLE 1—ULTIMATE DESIGN PRESSURE OF INSTALLATION SYSTEMS USING OMEGA-LITE® ACM PANELS

	INSTALLATION SYSTEMS		
	CLIP & CAULK SYSTEM WITH HORIZONTAL LAYOUT OF BD&V SUB-FRAMING OVER GYPSUM SHEATHING (Figure 1)	CLIP & CAULK SYSTEM WITH VERTICAL LAYOUT OF BD&V SUB-FRAMING OVER OMEGA CI (Figure 2)	1-PIECE, TIGHT-FIT MOLDING SYSTEM WITH VERTICAL LAYOUT OF BD&V SUB-FRAMING OVER OMEGA CI (Figure 3)
ULTIMATE DESIGN PRESSURE	+ 60 psf / -120 psf	+60 psf / -100 psf	+60 psf / -100 psf

For SI: 1 pound per square foot = 47.88 Pa

Identification:

1. Packaging of the Omega-Lite® ACM panels carry a label indicating the manufacturer's name (Laminators Inc.) and address, the product name (Omega-Lite® ACM panels), ICC-ES listing number (ESL-1250), and when applicable, the ICC-ES listing mark.
2. The report holder's contact information is the following:

LAMINATORS INC.
3255 PENN STREET
HATFIELD, PENNSYLVANIA 19440
(877) 663-4277
www.laminatorsinc.com

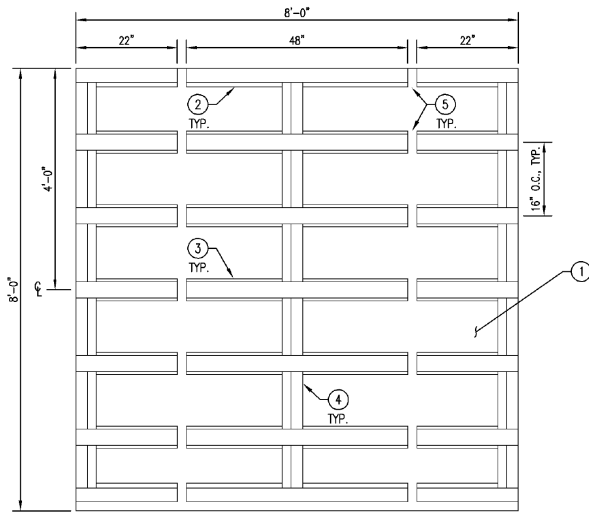
ICC-ES Evaluation Reports are not to be construed as representing aesthetics or any other attributes not specifically addressed, nor are they to be construed as an endorsement of the subject of the report or a recommendation for its use. There is no warranty by ICC Evaluation Service, LLC, express or implied, as to any finding or other matter in this report, or as to any product covered by the report.



Installation: The product must be installed in accordance with Laminators Inc's published installation instructions and applicable codes.

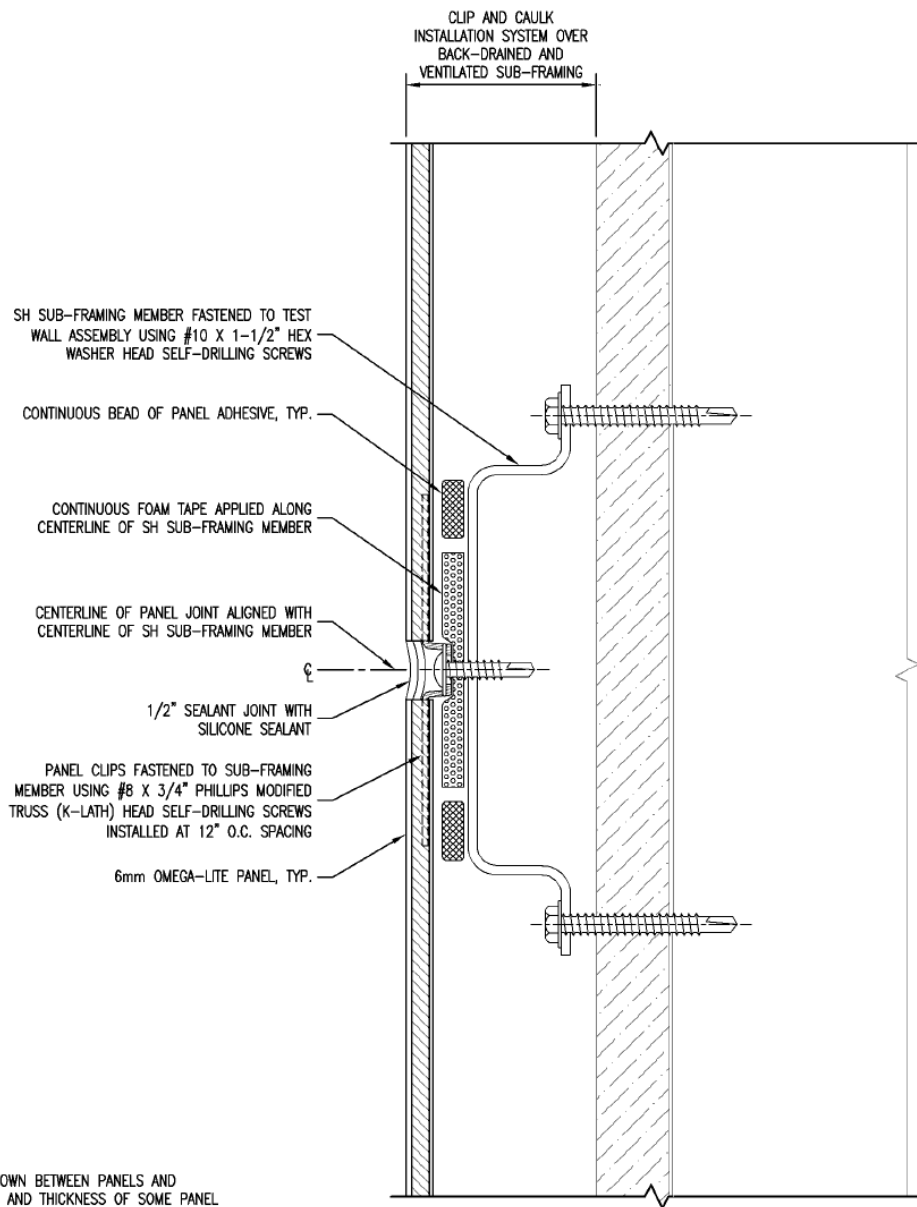
Conditions of Listing:

1. The listing report addresses only conformance with the standard and code sections noted above.
2. Approval of the product's use is the sole responsibility of the local code official.
3. The listing report applies only to the materials tested and as submitted for review by ICC-ES.
4. The Omega-Lite® ACM panels are manufactured under a quality control program with inspections by ICC-ES.



- ① TEST ASSEMBLY WITH GYPSUM SHEATHING
- ② EJ SUB-FRAMING MEMBERS INSTALLED ALONG TOP AND BOTTOM EDGES OF TEST WALL ASSEMBLY
- ③ SH SUB-FRAMING MEMBERS INSTALLED AT 16" O.C. SPACING BETWEEN HORIZONTAL EJ MEMBERS
- ④ DISCONTINUOUS FV SUB-FRAMING MEMBERS INSTALLED BETWEEN HORIZONTAL EJ AND SH MEMBERS ALONG VERTICAL PANEL JOINT AND EDGES OF TEST WALL ASSEMBLY; FV MEMBERS CONNECTED TO FLANGES OF HORIZONTAL MEMBERS
- ⑤ 2" DRAINAGE GAPS MAINTAINED IN EJ AND SH MEMBERS

NOTE: TESTING BUCK NOT SHOWN FOR CLARITY

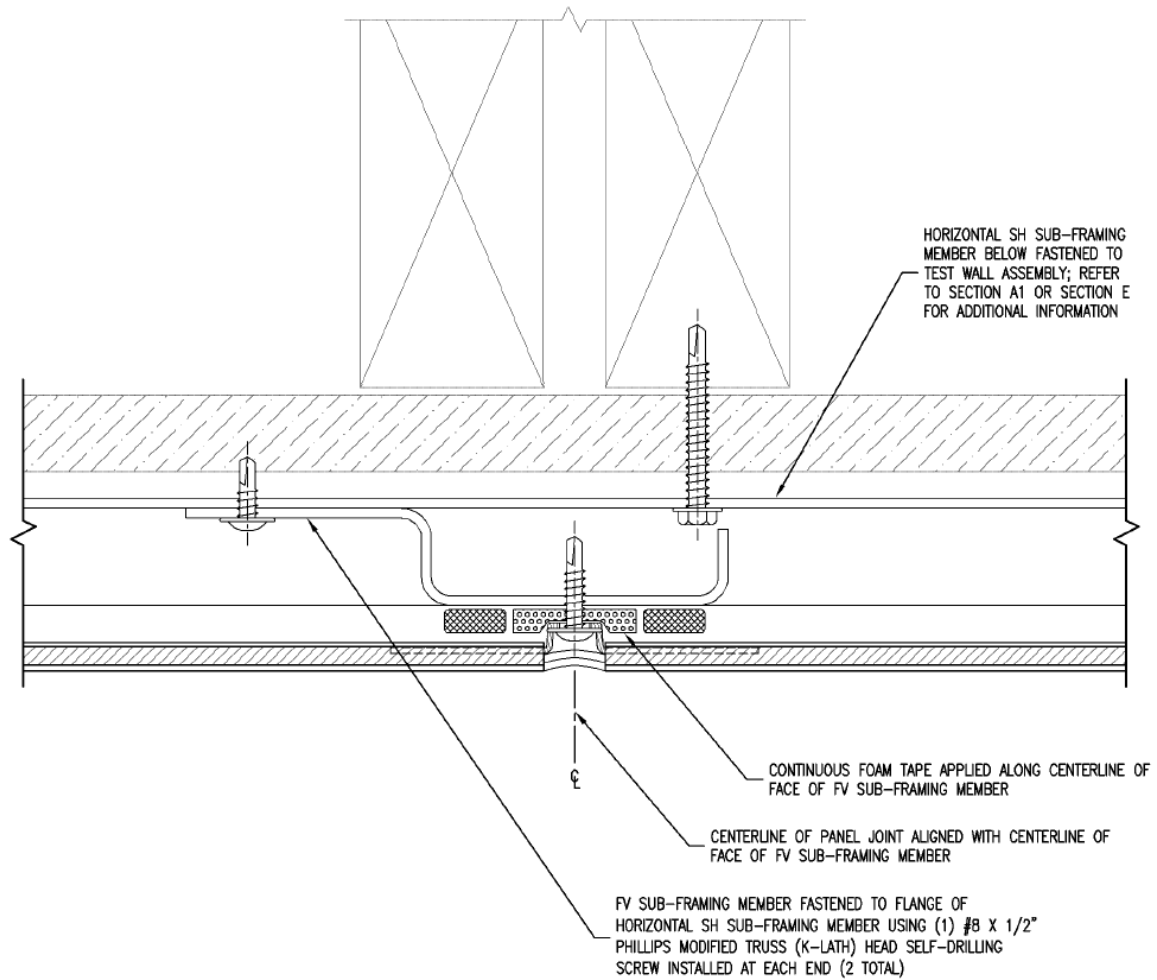


SECTION A1 - HORIZONTAL JOINT DETAIL

DETAIL NOTES:

- 1. SPACING SHOWN BETWEEN PANELS AND SUBSTRATES AND THICKNESS OF SOME PANEL SYSTEM COMPONENTS EXAGGERATED FOR CLARITY
- 2. REFER TO ELEVATION VIEWS FOR LAYOUT OF SUB-FRAMING MEMBERS, FOAM TAPE, AND PANEL ADHESIVE

FIGURE 1—CLIP & CAULK INSTALLATION SYSTEM WITH HORIZONTAL LAYOUT OF BD&V SUB-FRAMING OVER GYPSUM SHEATHING

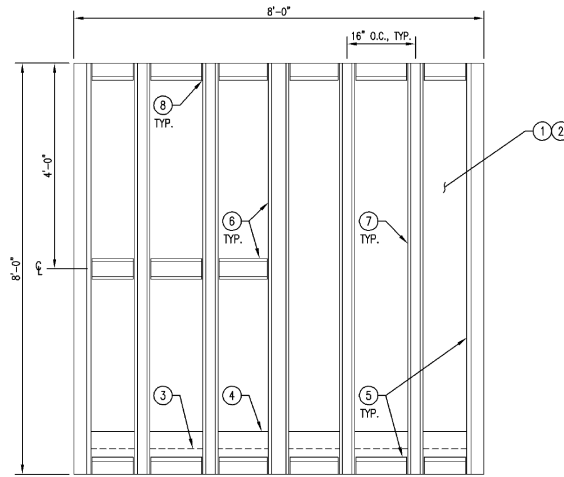


DETAIL NOTES:

1. SPACING SHOWN BETWEEN PANELS AND SUBSTRATES AND THICKNESS OF SOME PANEL SYSTEM COMPONENTS EXAGGERATED FOR CLARITY
2. REFER TO ELEVATION VIEWS FOR LAYOUT OF SUB-FRAMING MEMBERS, FOAM TAPE, PANEL ADHESIVE, AND MOLDINGS
3. REFER TO HORIZONTAL JOINT DETAIL (SECTION A1) FOR TYPICAL COMPONENTS NOT ANNOTATED

SECTION A2 - VERTICAL JOINT DETAIL

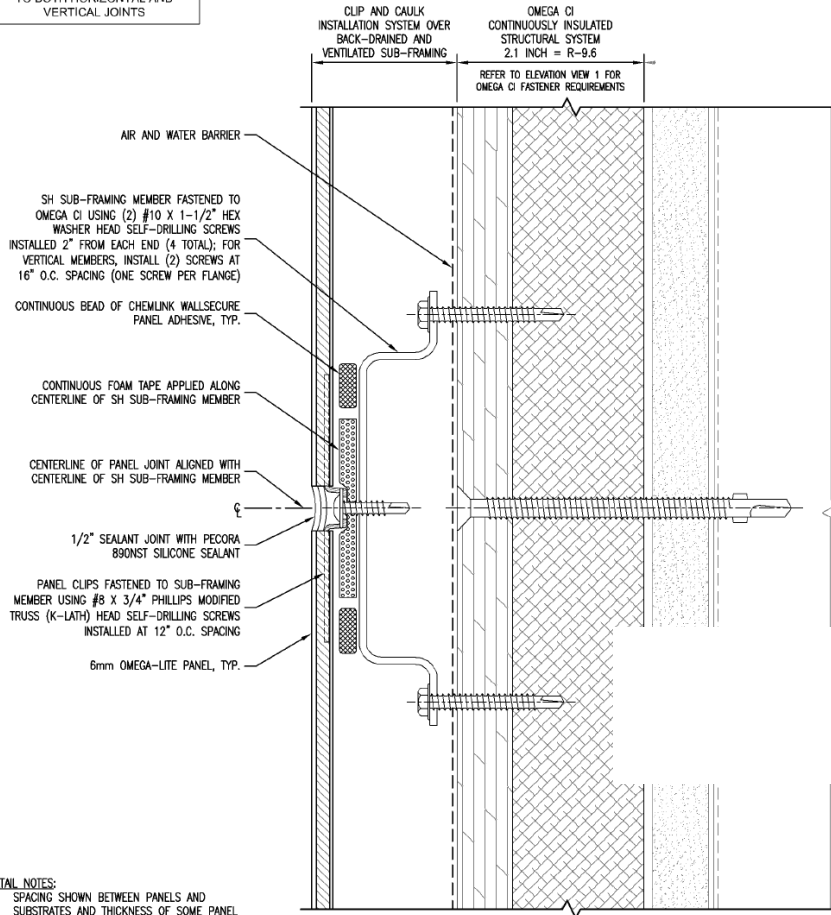
FIGURE 1—CLIP & CAULK INSTALLATION SYSTEM WITH HORIZONTAL LAYOUT OF BD&V SUB-FRAMING OVER GYPSUM SHEATHING (continued)



- ① OMEGA CI RIGID INSULATION PANELS (4' X 8' SHEETS, 2.1" THICK)
 - PANELS CONSIST OF CLOSED-CELL, POLYISOCYANURATE FOAM BONDED TO A COATED GLASS BACKER AND 5/8" FIRE-TREATED PLYWOOD AS AN EXTERIOR FACE
 - PANELS INSTALLED ON WALL ASSEMBLY COMPRISING EXTERIOR-GRADE GYPSUM SHEATHING INSTALLED OVER STEEL STUDS
 - PANELS FASTENED TO STUD FRAMING USING 1/4" X 3-3/4" FPH WINGED REAMERS INSTALLED AT 8" O.C. SPACING ALONG PERIMETERS AND 16" O.C. VERTICAL SPACING ALONG STUDS
 - SELF-ADHERING MEMBRANE FLASHING APPLIED TO BOTTOM EDGE OF OMEGA CI PANELS AND WRAPPED 2" (MIN) ON EACH VERTICAL FACE INCLUDING ENDS (NOT SHOWN)
- ② HENRY AIR-BLOC 31MR FLUID-APPLIED AIR AND WATER BARRIER
- ③ METAL BASE WALL FLASHING
- ④ SELF-ADHERING MEMBRANE FLASHING LAPPED OVER TOP OF METAL BASE WALL FLASHING IN SHINGLE FASHION
- ⑤ EJ SUB-FRAMING MEMBERS INSTALLED ALONG PERIMETER OF INSTALLATION; CONTINUOUS MEMBERS AT VERTICAL EDGES AND DISCONTINUOUS MEMBERS FIT BETWEEN FLANGES OF VERTICAL MEMBERS AT HORIZONTAL EDGES
- ⑥ SH SUB-FRAMING MEMBERS INSTALLED ALONG PANEL JOINTS; CONTINUOUS MEMBERS AT VERTICAL JOINT AND DISCONTINUOUS MEMBERS FIT BETWEEN FLANGES OF VERTICAL MEMBERS AT HORIZONTAL JOINT
- ⑦ CONTINUOUS AH SUB-FRAMING MEMBERS INSTALLED AT 16" O.C. SPACING BETWEEN VERTICAL EJ AND SH MEMBERS
- ⑧ MESH VENT MATERIAL PLACED INTO GAPS BETWEEN HORIZONTAL AND VERTICAL MEMBERS AT TOP AND BOTTOM OF WALL (NOT SHOWN)

NOTE: TESTING BUCK NOT SHOWN FOR CLARITY

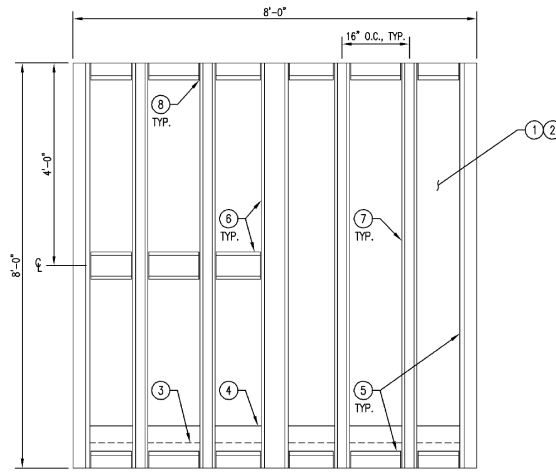
NOTE: THIS DETAIL IS APPLICABLE TO BOTH HORIZONTAL AND VERTICAL JOINTS



- DETAIL NOTES:
1. SPACING SHOWN BETWEEN PANELS AND SUBSTRATES AND THICKNESS OF SOME PANEL SYSTEM COMPONENTS EXAGGERATED FOR CLARITY REFER TO ELEVATION VIEWS FOR LAYOUT OF SUB-FRAMING MEMBERS, FOAM TAPE, AND PANEL ADHESIVE

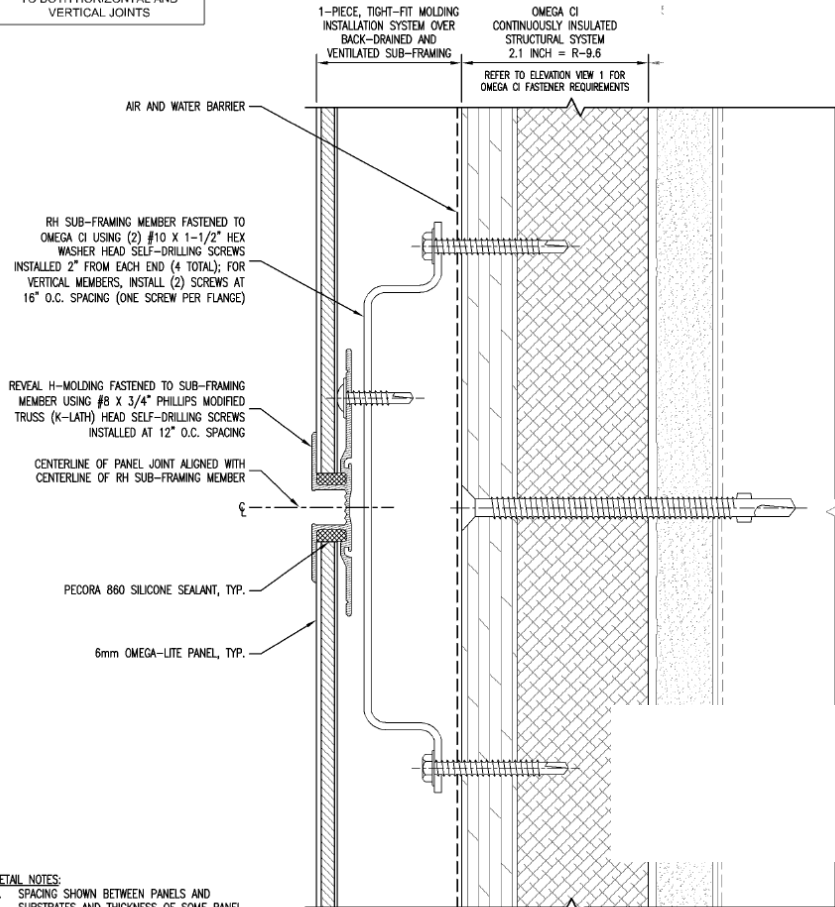
SECTION A - TYPICAL JOINT DETAIL

FIGURE 2—CLIP & CAULK INSTALLATION SYSTEM WITH VERTICAL LAYOUT OF BD&V SUB-FRAMING OVER OMEGA CI



- ① OMEGA CI RIGID INSULATION PANELS (4' X 8' SHEETS, 2.1" THICK)
 - PANELS CONSIST OF CLOSED-CELL, POLYISOCYANURATE FOAM BONDED TO A COATED GLASS BACKER AND 5/8" FIRE-TREATED PLYWOOD AS AN EXTERIOR FACE
 - PANELS INSTALLED ON WALL ASSEMBLY COMPRISING EXTERIOR-GRADE GYPSUM SHEATHING INSTALLED OVER STEEL STUDS
 - PANELS FASTENED TO STUD FRAMING USING 1/4" X 3-3/4" FPH WINGED REAMERS INSTALLED AT 8" O.C. SPACING ALONG PERIMETERS AND 16" O.C. VERTICAL SPACING ALONG STUDS
 - SELF-ADHERING MEMBRANE FLASHING APPLIED TO BOTTOM EDGE OF OMEGA CI PANELS AND WRAPPED 2" (MIN) ON EACH VERTICAL FACE INCLUDING ENDS (NOT SHOWN)
 - ② HENRY AIR-BLOC 31MR FLUID-APPLIED AIR AND WATER BARRIER
 - ③ METAL BASE WALL FLASHING
 - ④ SELF-ADHERING MEMBRANE FLASHING LAPPED OVER TOP OF METAL BASE WALL FLASHING IN SHINGLE FASHION
 - ⑤ EJ SUB-FRAMING MEMBERS INSTALLED ALONG PERIMETER OF INSTALLATION; CONTINUOUS MEMBERS AT VERTICAL EDGES AND DISCONTINUOUS MEMBERS FIT BETWEEN FLANGES OF VERTICAL MEMBERS AT HORIZONTAL EDGES
 - ⑥ RH SUB-FRAMING MEMBERS INSTALLED ALONG PANEL JOINTS; CONTINUOUS MEMBERS AT VERTICAL JOINT AND DISCONTINUOUS MEMBERS FIT BETWEEN FLANGES OF VERTICAL MEMBERS AT HORIZONTAL JOINT
 - ⑦ CONTINUOUS AH SUB-FRAMING MEMBERS INSTALLED AT 16" O.C. SPACING BETWEEN VERTICAL EJ AND RH MEMBERS
 - ⑧ MESH VENT MATERIAL PLACED INTO GAPS BETWEEN HORIZONTAL AND VERTICAL MEMBERS AT TOP AND BOTTOM OF WALL (NOT SHOWN)
- NOTE: TESTING BUCK NOT SHOWN FOR CLARITY

NOTE: THIS DETAIL IS APPLICABLE TO BOTH HORIZONTAL AND VERTICAL JOINTS



- DETAIL NOTES:
1. SPACING SHOWN BETWEEN PANELS AND SUBSTRATES AND THICKNESS OF SOME PANEL SYSTEM COMPONENTS EXAGGERATED FOR CLARITY
 2. REFER TO ELEVATION VIEWS FOR LAYOUT OF SUB-FRAMING MEMBERS, FOAM TAPE, PANEL ADHESIVE, AND MOLDINGS

SECTION A - TYPICAL JOINT DETAIL

FIGURE 3—1-PIECE, TIGHT-FIT MOLDING INSTALLATION SYSTEM WITH VERTICAL LAYOUT OF BD&V SUB-FRAMING OVER OMEGA CI