

NEW!



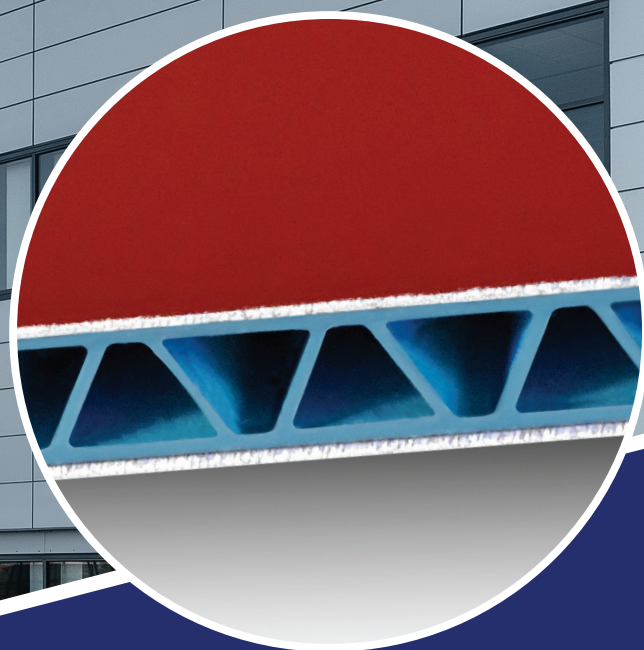
LAMINATORS

Composite Panel Solutions

**ADAPT TO A WHOLE NEW LEVEL
OF PERFORMANCE.**

AdaptaClad® RS

ACM Panel
Installation
System



EFFECTIVE MARCH 2025

AdaptaClad® RS ACM Panel Installation System

AdaptaClad® RS is an extremely adaptable, easy-to-use rainscreen installation system designed to utilize our NEW Omega-Lite® FR ACM panels.

This new shop-fabricated system provides significant time and labor savings to fabricators and installers.

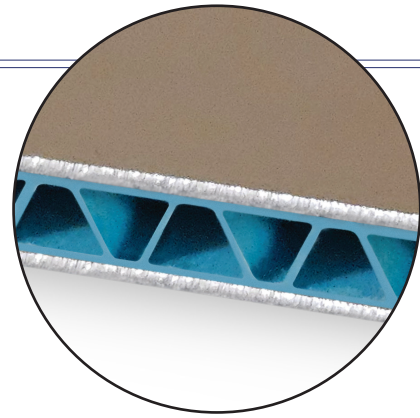
AdaptaClad RS is a weather-resistant exterior wall cladding panel system that combines a modern reveal-joint aesthetic with drained and back ventilated rainscreen performance. It can be installed over a variety of substrates and on projects requiring Continuous Insulation (CI), such as our Omega CI® rigid insulation panels or third-party CI solutions.

- Built-in adaptability to install over almost any building substrate
- Simple-hang installation requiring mechanical attachment on only two sides of the panel module
- Rainscreen system with an open dry joint design characterized by a deep reveal terminated with an insert strip installed without the use of caulks or adhesives
- Dry joint aesthetic with customizable joint width from 9/16" (standard) up to 4"
- Utilizes continuous perimeter extrusions that provide versatility on stiffener and clip locations
- Economical baseline system design for typical projects requiring up to 30 psf (ASD) wind loads; easily adapted to higher wind load requirements
- System testing
 - NFPA 285 (Fire Performance)
 - AAMA 509 (Drainage & Ventilation)
 - ASTM E283 (Rate of Air Leakage)
 - ASTM E331 (Water Penetration)
 - ASTM E330 (Structural Performance)



AdaptaClad® RS utilizes our NEW Omega-Lite® FR ACM panels, aluminum panel extrusions and clips, and accessories.

Omega-Lite FR consists of a corrugated thermoplastic core with fire-resistant additive bonded to a finished aluminum sheet on one face and a protective mill finished sheet of aluminum on the other. With a multitude of standard colors and various finishes, your design options are endless; we also offer custom colors to match your exact specifications. Omega-Lite FR provides a decorative, strong, durable surface finish for exterior wall surfaces and is non-absorbent, water-resistant, and easy to maintain.



AdaptaClad RS provides a long list of cost and labor advantages over other industry rainscreen systems.

Minimized overall material costs

- Optimized design utilizes proprietary perimeter extrusions to provide versatility on panel stiffener and clip locations
- Panel stiffeners integrate with perimeter extrusions, eliminating the need for attachment brackets
- Two-sided panel module attachment uses fewer panel clips and fasteners, and eliminates the need for supplementary rails or strapping for most installs—reducing install times and overall labor
- Allows continuous insulation rails to serve as structural support behind horizontal panel joints—reducing the cost of additional rails
- Clips are easy to position and less expensive than continuous extrusions

Minimized shop-fabricated labor

- Approximately 35% less CNC time required compared with double-bend systems
- Simplified detailing eliminates precise fit of mitered corners or corner blocks
- Silicone press-in soffit vent with integrated insect screen
- No need for weep holes and screens on panels installed in vertical orientation

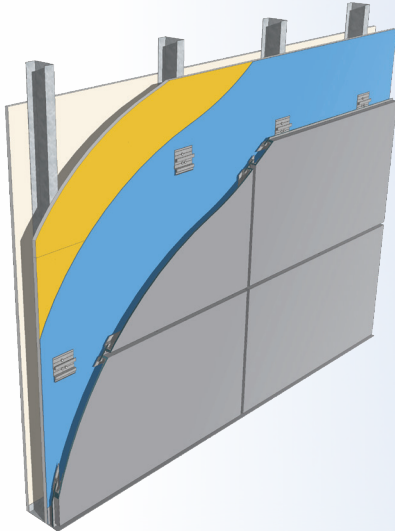
Minimized field installation labor

- Panels are approximately 44% lighter and easier to work with than solid-core FR panels

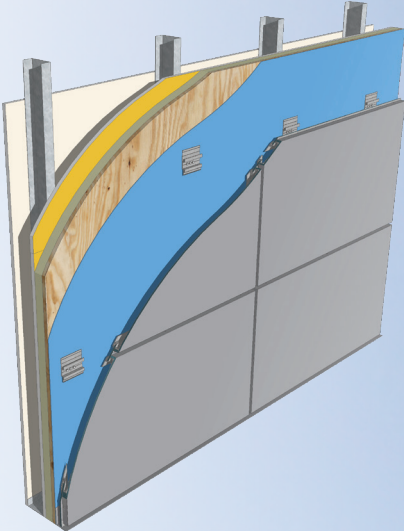
It's time to adapt to a whole new level of performance.

Visit [LaminatorsInc.com](https://www.laminatorsinc.com) for more information on AdaptaClad RS installation and applications.

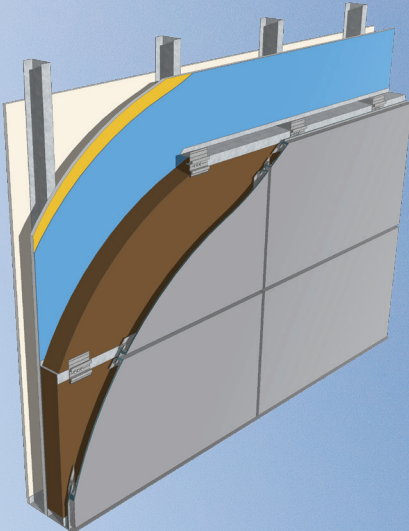
AdaptaClad® RS ACM Panel Installation System



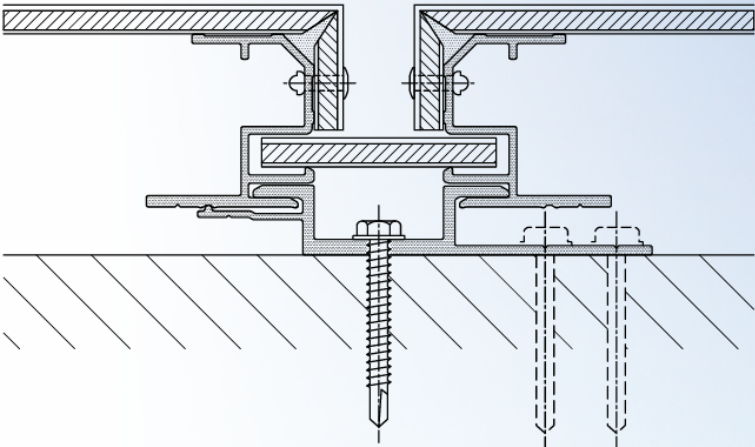
*AdaptaClad RS
Over Gypsum*



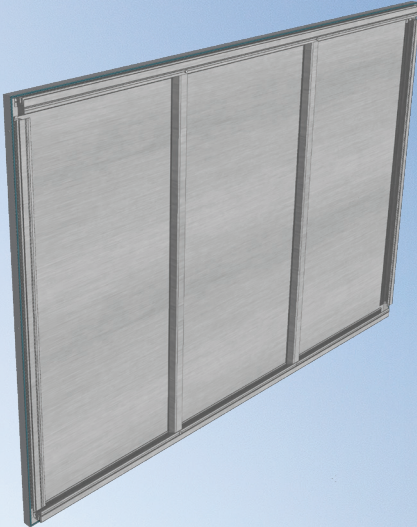
*AdaptaClad RS
Over Omega CI®*



*AdaptaClad RS
Over Third-Party CI*



Joint Detail



Back of Panel



LAMINATORS
Composite Panel Solutions

3255 Penn Street, Hatfield, PA 19440-1731
800.523.2347 | LaminatorsInc.com